

LEIZHAN[®]

磊展机械

▪ LEIZHAN MACHINE ▪

**PROFESSIONAL TECHNOLOGY
SERVICE FOR PAPERMAKING INDUSTRY**

ZHENGZHOU LEIZHAN TECHNOLOGY
PAPER MACHINERY CO., LTD



**ZHENGZHOU LEIZHAN
TECHNOLOGY
PAPER MACHINERY CO., LTD.**

CATALOGUE OF PRODUCTS

Company Profile.....	04
Company Certificate.....	06
Workshop.....	08
Customers visiting.....	09
Delivery Site.....	11
Working Site.....	12
Product Components.....	13

PULPING MACHINE

BFW Series Chain Conveyor.....	16
SBJ Series Bale Breaker.....	17
ZG Series Drum Pulper.....	18
ZDSD Series D Type Hydrapulper.....	19
ZDSG H.C. H Hydrapulper.....	21
ZDSZ Series M.C. Hydrapulper.....	22
PX Series Eccentric Pulper.....	23
ZSZ SERIES BROKEN PULPER.....	24
ZST Series Drum Screen.....	25
ZSF Series Hydrapurger.....	26
CXJ Series Hydrapurge.....	27
ZTS Series Ragger.....	28
Rope Cutter.....	29
ZSc Series. HD Series High Density Cleaner.....	30
TZJSeries slag Lifting Machine.....	31
ZDFD Series Single Effect Fiber Separator.....	32
JNs Series Energy-Saving Pressure Screen.....	33
ZDF Series Single Fiber Separator.....	34
TD Series Tailing pulp pressure screen of coarse screen.....	35
PZ Series Reject Separator.....	36
CSYTs Series Drum screen for Coarse Screening.....	37
ZSK Series Vibrating Screen.....	38
LZ series Heavy Impurity Cleaner.....	39
KH Series Low Density Cleaner.....	40
ZNS Series M.C. Pressure Screen.....	41
XZNS Series New Mid-Consistency Pressure screen.....	42
FQJ Light Impurity Separator.....	43
NLS Inflow Pressure Screen.....	44
ZNP Series Disc Thickener.....	45
DF Disc Filter.....	46
ZDP Series Double Disc Refiner.....	47
Production capacity(T/D).....	48
RF Series Double Disc Refiner.....	49
ZDJ Series Fiber Deflaker.....	50
SJJ FIBER DEFLAKER.....	51
ZM Series Conical Refiner.....	52

PAPER MACHINE

ZFM Flotation Deinking Machine.....	53
ZNG High-speed Stock Washer.....	54
Dispersion System.....	55
ZNX Series Inclined Screw Thickener.....	56
LXYz Series Screw Press.....	57
ZRPSeries Disc Disperser.....	58
ZDR Series Kneader.....	59
zLs Series Heating Screw Conveyor.....	60
JB Series Agitator.....	61
HD Series Sludge Dewatering Machine.....	62
ZZJZJ Series Heavy Slag Extruder.....	63
Pulp Pump.....	64
Main Specification.....	65
Kraft Liner Board Machine.....	70
Corrugated Paper Machine.....	71
High-grade Cultural Paper Machine.....	72
Tissue Paper Making Machine.....	73
Coating Board Paper Machine.....	74
Cylinder Mould Type Tube Paper Machine.....	75
Overfeed Rewinder.....	76
Paper Machine Spare Parts.....	77
Part of Customer List.....	82



COMPANY INTRODUCE

Zhengzhou Leizhan Technology Paper Machinery Co., Ltd. is located in Hetun Industrial Area, Dawei Town, Henan Province, 50 km away from Zhengzhou city, nearby Chinese first temple in the west---Shaolin Temple. Leizhan is a professional manufacturer of pulp& paper equipments, which engaged in research and development, manufacture and sale, over 200 staffs, including 50 engineers and technicians. Annual production and processing capacity is more than \$38million.



Considering the market orientation, Leizhan is specialized in complete set of screening, slag removal, pulping and refining equipment. It has strong technical force, excellent numerical control processing machinery, and perfect detection means. This company has been certified for State ISO9001 Quality System Certification and owns 177 patents, also passed BV, TUV certification.

Company Certificate



Patent Certificate



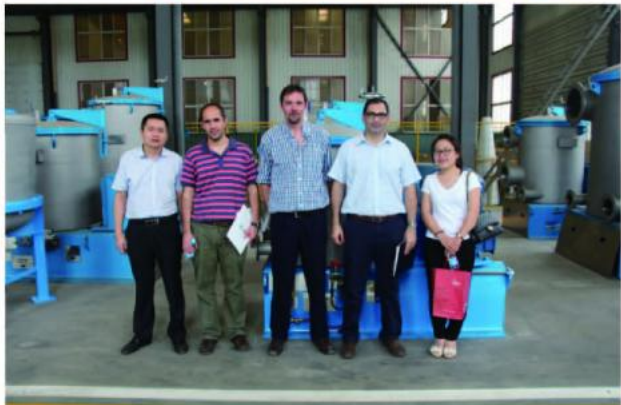
Workshop



Customers Visiting



Customers Visiting



Delivery Site

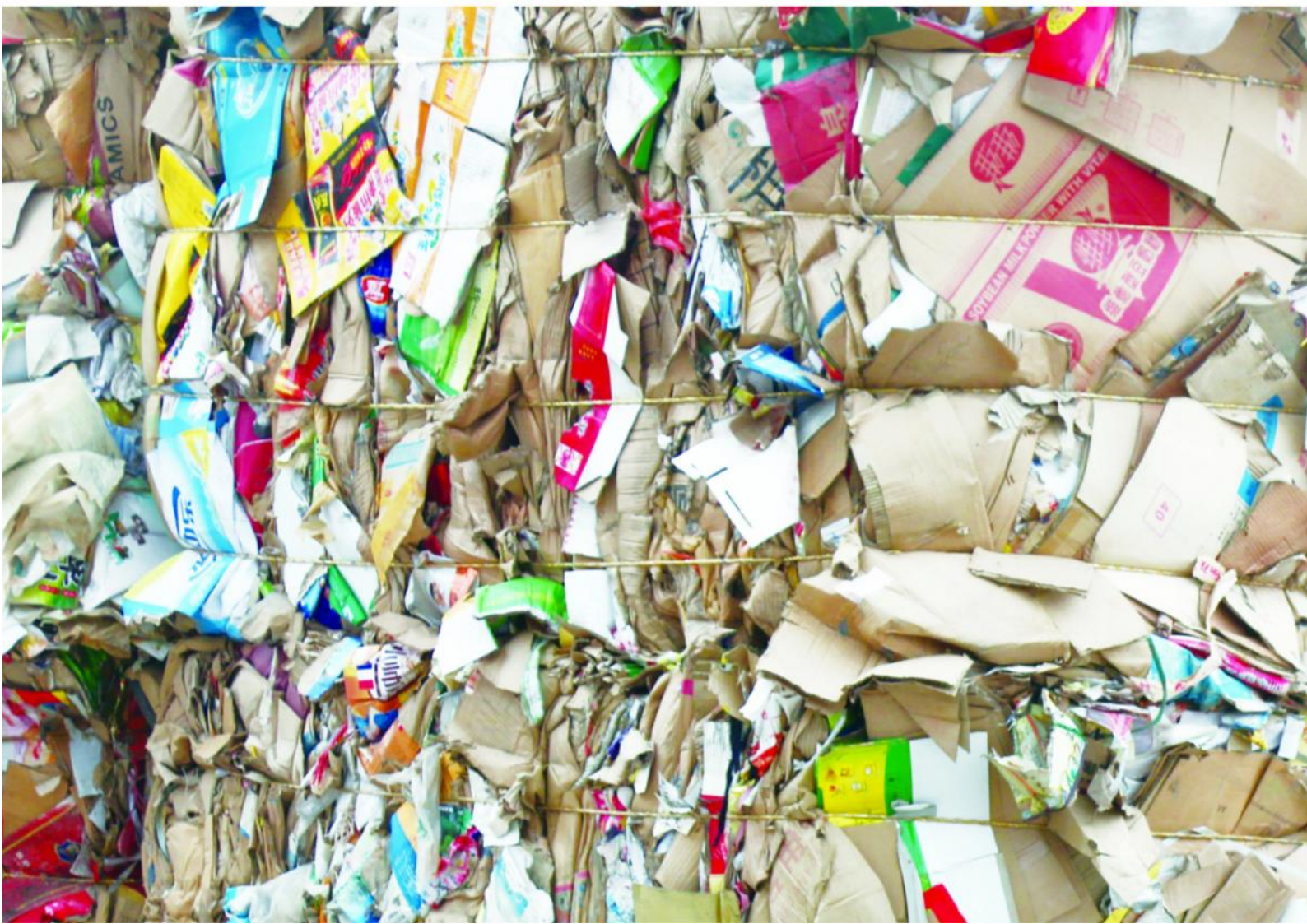


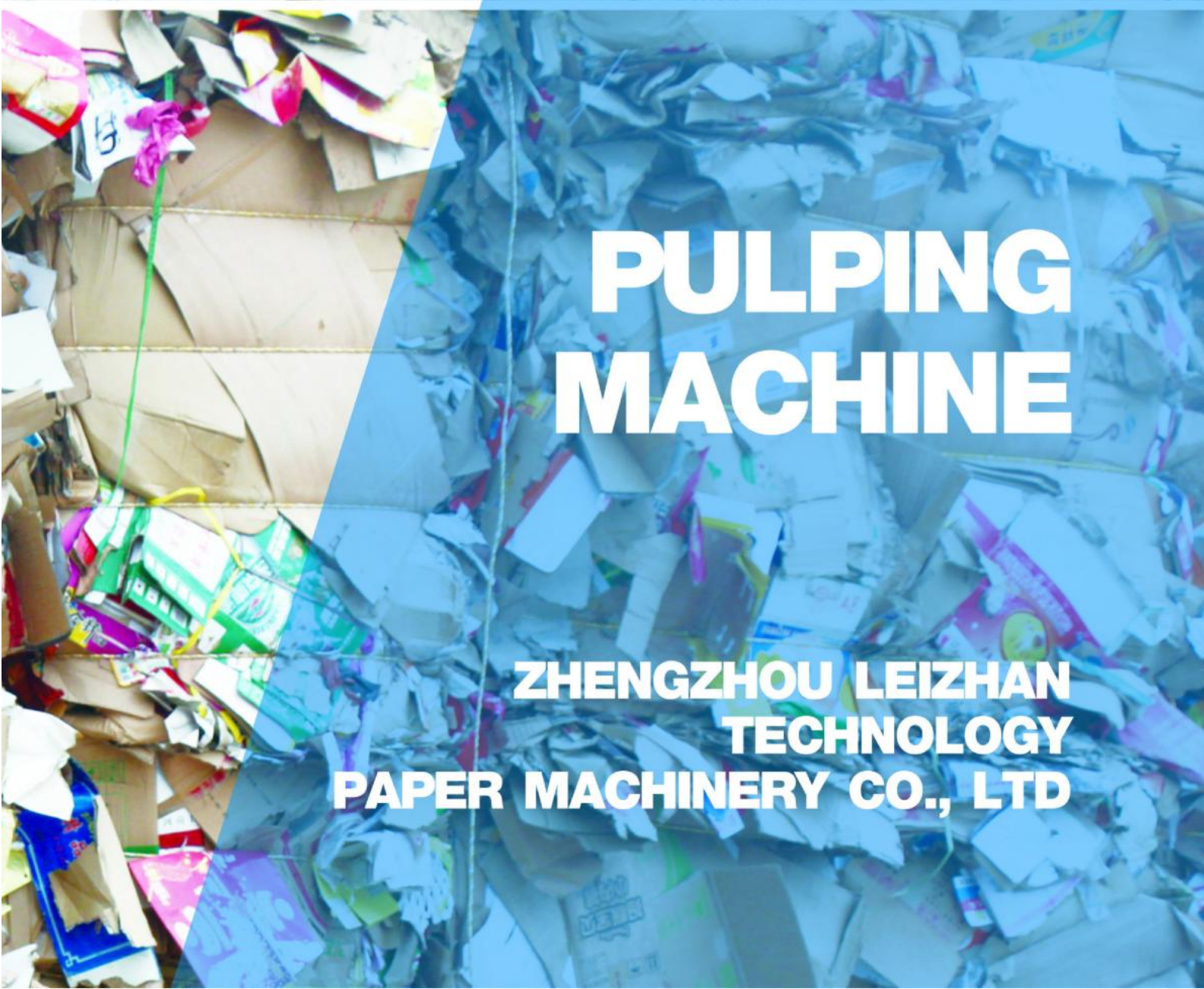
Working Site



Product Components







PULPING MACHINE

**ZHENGZHOU LEIZHAN
TECHNOLOGY
PAPER MACHINERY CO., LTD**



BFW Series Chain Conveyor

Application&Feature

1. Mainly used for conveying various kinds of pulp board, waste paper in bulk and in bundle which can be horizontal conveyor or inclined conveyor(<30°).
2. Adopt specially made chain drive one-time impact stamping, trough plate to convey material, which has advantages of large capacity, low motor power, less wear, reliable operation and high efficiency.

Main Specification

Type	BFW							
Chain Plate Width (mm)	1200	1400	1600	1800	2000	2200	2400	2600
Feeding Capacity (m ³ /h)	60-220	80-255	95-300	110-345	140-390	160-430	200-500	240-600
Conveying Material	Waste Paper / Pulp Board							
Max.limit Of Material (mm)	1000	1200	1400	1600	1800	2000	2200	2400
Motor Power(kw)	5.5	7.5	11	15	18.5	22-30	30-45	37-55



SBJ Series Bale Breaker

Application&Feature

1. Used for waste paper bales breaking and selecting.
2. The hole of drum can remove smaller impurities in the waste paper under dry condition.
3. To removal impurities can reduce wear to the following equipment, such as: pulper, cleaner, pulp pump, pipe, pressure screen, pulp refiner. So that the equipment can be protected.

Main Specification

Type	SBJ3000	SBJ3250	SBJ3500	SBJ3750	SBJ4000	SBJ4250
Nominal Diameter (mm)	Φ3000	Φ3250	Φ3500	Φ3750	Φ4000	Φ4250
Processing Capacity(t/d)	220-600	260-750	300-900	330-1100	380-1200	500-1500
Motor Power(kw)	18.5×2	22×2	30×2	30×2	37×2	45×2



ZG Series Drum Pulper

Application&Feature

1. Mainly used for continuous gentle pulping and coarse screening of waste paper under high consistency. Drum pulper can continuous pulp and preliminary screen, simplify process.
2. It can gently pulp under 14%-18% high consistency to uttermost maintain the physical property of fiber.
3. Low damage to impurities and high efficiency of deslagging reduce the following equipment burden.
4. Low energy consumption, reduce running cost, improve the competitiveness for per ton pulp.
5. Long pulping residence time, sufficient fiber relief, low rate fine fiber loss.
6. Few quick-wear parts, continuous pulping, low maintenance cost.

Main Specification

Type	ZG2500	ZG2750	ZG3000	ZG3250	ZG3500	ZG3750	ZG4000	ZG4250	ZG4500
Drum Diameter(mm)	Φ2500	Φ2750	Φ3000	Φ3250	Φ3500	Φ3750	Φ4000	Φ4250	Φ4500
Production Capacity (t/d)	70-120	140-200	200-300	240-400	400-600	550-800	750-1000	1000-1400	1400-1800
Working Consistency (%)	14-18								
Motor Power(kw)	132-160	160-200	280-315	315-400	560-630	630-800	800-1000	1000-1400	2×710-1200



ZSD Series D Type Hydrapulper

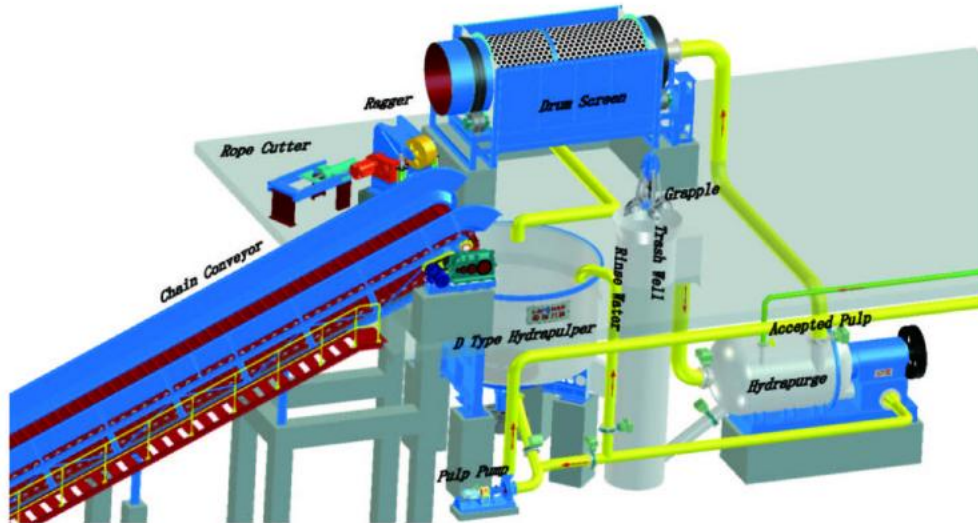
Application&Feature

1. New type energy-saving VOKES rotor strengthens hydraulic circulation and fiber relief.
2. D type structure changes slurry flow ways, make contact between pulp and rotor more quick and frequent. The mechanical action is enhanced, pulping time is shortened so that the capacity is improved.
3. Pulp chamber of rotor is higher than the undersurface of pulper barrel, form a low pressure area around rotor to collect heavy impurities, reduce wear to cutterhead and sieve plate. So that can prolong the rotor and sieve plate service life .
4. Adjustable gap between rotor and sieve plate ensures the pulping effect.
5. When D type hydrapulper work with hydrapulper, drum screen, ragger, rope cutter and grapple and form continuous pulping and deslagging system, the large light and heavy impurities in pulper can be rejected in time, which avoid pulping the impurities, reduce the following equipment burden. At the same time, it take less time to stop and clean, improve the whole system dealing capacity.

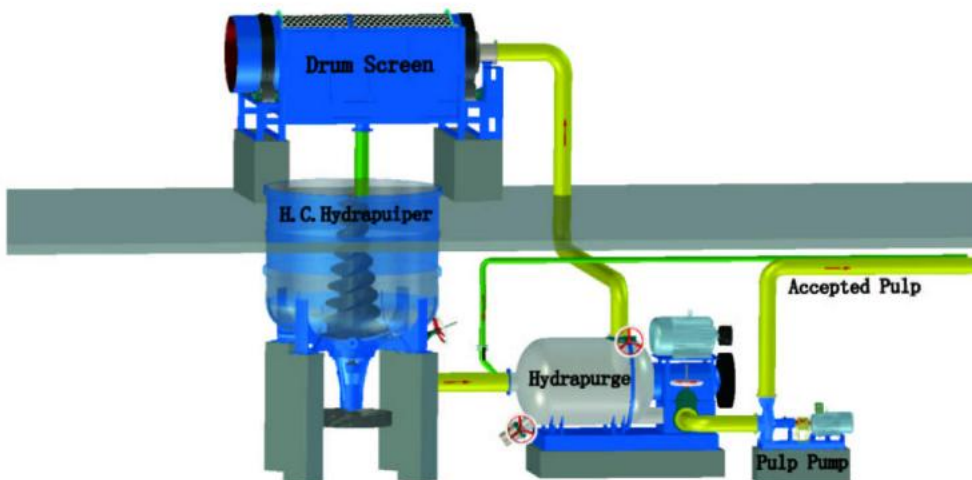
Main Specification

Type	ZSD 23	ZSD 24	ZSD 25	ZSD 26	ZSD 27	ZSD 28	ZSD 29	ZSD 30	ZSD 31	ZSD 32	ZSD 33	ZSD 34	ZSD 35	ZSD 36	ZSD 37
Normal Volume(m ³)	5	10	15	20	25	30	35	40	45	50	60	70	90	120	140
Consistency (%)	3-5														
Production Capacity(t/d)	30- 60	40- 100	80- 120	140- 180	180- 230	230- 280	270- 320	300- 370	350- 400	400- 450	460- 550	550- 650	650- 800	800- 1000	1000- 1200
Motor Power(kw)	75	110	160	185	220	280	315	355	400	450	560	630	900	1100	1250

Disposition Drawing Of Breaking In Low Consistency And Continuous Impurity-removing System



Disposition Drawing Of Breaking In High Consistency System





ZDSG H.C. Hydrapulper

Application&Feature

1. Mainly used for separating waste paper and ink under high consistency in waste paper deinking process.
2. Special spiral rotor effectively promote the circulation and rollover of pulp, reinforce friction between fibers. Finally achieve gentle pulp under high consistency, impurities will not be broke in the process of fiber relief and deinking.
3. Dealing with 12%-18% high consistency pulp, effective chemical mixture and friction between fibers under high consistency make the ink particle separate from the surface of fiber fully.
4. Compact structure, convenient operation and maintenance.

Main Specification

Type	ZDSG5	ZDSG10	ZDSG15	ZDSG20	ZDSG25	ZDSG30	ZDSG35
Normal Volume(m ³)	5	10	15	20	25	30	35
Consistency (%)	10-15						
Production Capacity(t/d)	20-25	40-50	60-70	80-100	130-185	160-225	185-260
Motor Power(kw)	110	220	315	400	450	500	560



ZDSZ Series M.C. Hydrapulper

Application&Feature

1. Mainly used for pulping wood pulp and other clean raw materials.
2. Pulp consistency can reach 5%-8%.
3. Energy-saving S type rotor, adjustable gap between rotor and sieve plate guarantee the pulping effect.

Main Specificationa

Type	ZDSZ24	ZDSZ25	ZDSZ26	ZDSZ27	ZDSZ28	ZDSZ29	ZDSZ30	ZDSZ31	ZDSZ32	ZDSZ33
Normal Volume(m ³)	10	15	20	25	30	40	50	70	90	120
Consistency (%)	5-8									
Production Capacity(t/d)	40-60	60-90	80-120	120-170	140-190	220-290	300-400	450-600	600-800	850-1100
Motor Power(kw)	90	132	160	200	250	315	400	630	800	1000



PX Series Eccentric Pulper

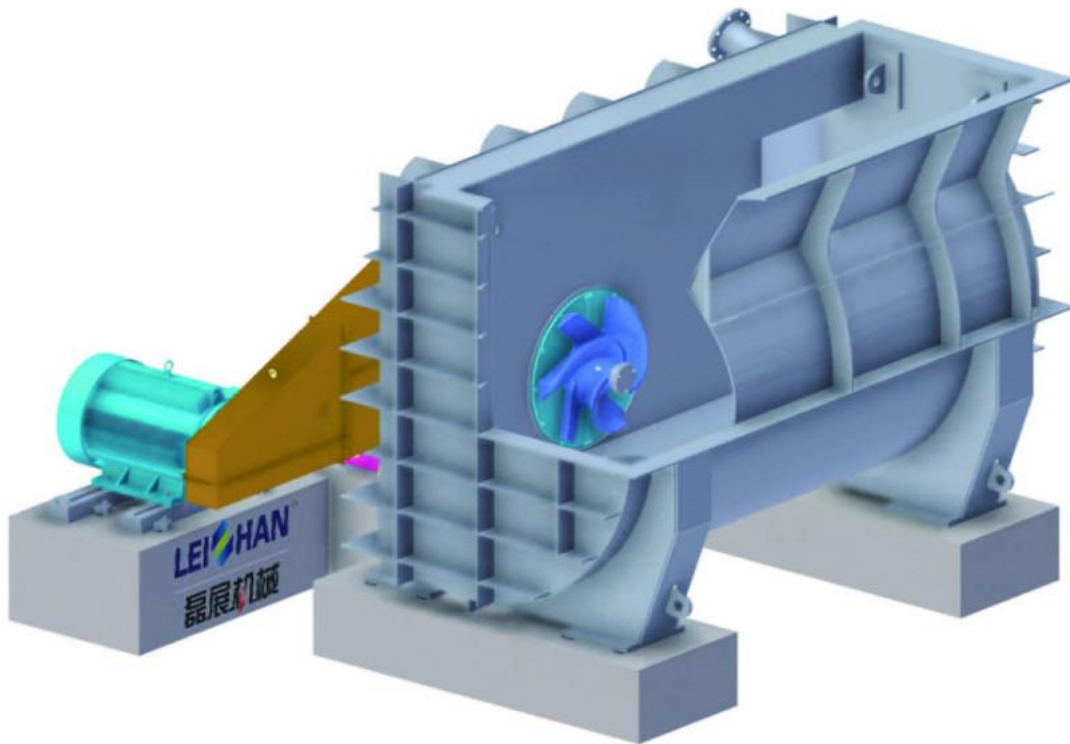
Application and features:

1. It is used to pulp all kinds of waste paper, virgin pulp board and paper machine broken paper.
2. Rotor and sieve plate with eccentric design, double cone structure.
3. Lower energy consumption, 20% energy saving than traditional pulper.
4. The twisted rope of the Ragger has a wider movement area, the twisted rope is far away from the rotor, the rotor load is smaller, and the risk of twisted rope breakage is reduced.

The main technical parameters

PX-V Eccentric Pulper										
Model	PX15-V	PX20-V	PX25-V	PX30-V	PX35-V	PX40-V	PX50-V	PX65-V	PX85-V	PX107-V
Nominal volume: m ³	15	20	25	30	35	40	50	65	85	107
Treatment consistency: %	4-8									
Capacity: t/d	60-90	80-120	120-170	140-190	10-230	220-290	300-400	400-550	600-700	800-1000
Motor power: kw	110	132	160	220	250	280	355	500	630	800

PX-R Eccentric Pulper										
Model	PX20-R	PX25-R	PX30-R	PX35-R	PX40-R	PX52-R	PX73-R	PX95-R	PX12-R	PX175-R
Nominal volume: m ³	20	25	30	35	40	50	65	85	120	175
Treatment consistency: %	4-8									
Capacity: t/d	140-180	180-230	230-280	270-320	300-370	400-450	550-600	650-750	800-1000	1300-1500
Motor power: kw	160	185	250	280	315	400	560	710	900	1300



SZS SERIES BROKEN PULPER

Application&Feature

- 1、 Mainly used for broken paper treatment from press section, calender, paper reel section,etc;
- 2、 Optimized rotor shape for higher turbulence at the lowest power consumption;
- 3、 High pumping efficiency greatly increases the friction between the fibers - not only relying on mechanical forces between rotor and screen plate for pulp disintegration.

MAIN Specification

model	SZS1	SZS2	SZS3
Rotor Dia. (mm)	Φ750	Φ1000	Φ1300
Width of the chest (mm)	2500-5000	3500-6000	4500-8000
Pulp consistency (%)		3-5	
Screen hole size (mm)		10-24	
Motor power (KW)	45-160	90-355	200-630



ZST Series Drum Screen

Application&Feature

1. Mainly used for removing large light impurities in waste paper pulping system.
2. Optimized helical blade and water spray system ensure the high purity of impurities and less loss of fiber.
3. Simple structure, reliable operation and easy maintenance.
4. Effective screening, low motor power.

Main specification

Type	ZST1A	ZST2A	ZST4A
Diameter Of Screen Drum(mm)	Φ1000	Φ1500	Φ2000
Passing Capacity (l/min)	3000-5000	6000-8000	9000-12000
Motor Power (kw)	4	5.5	11



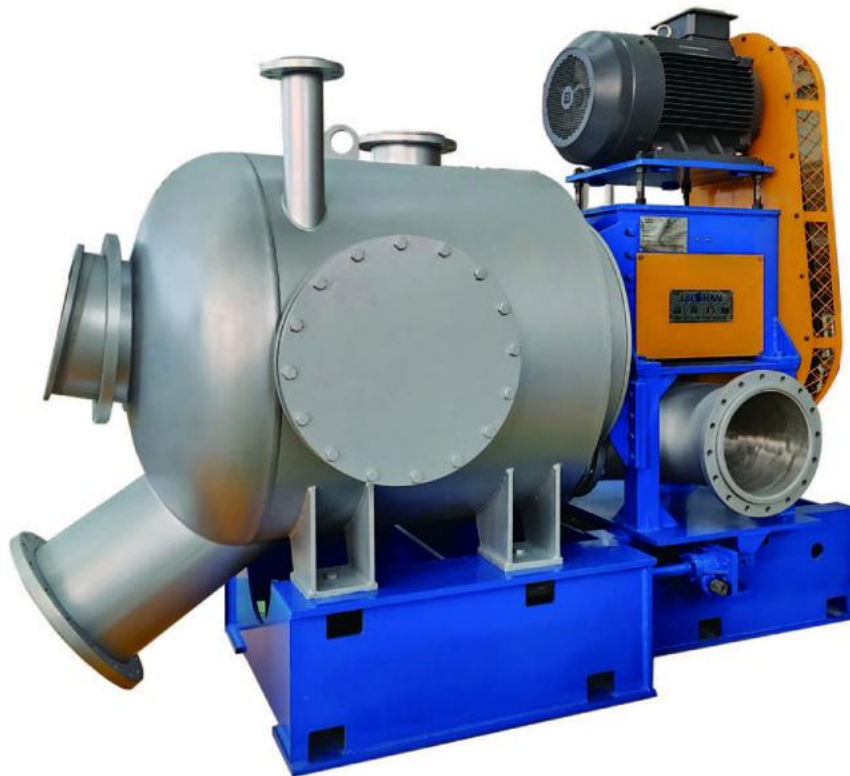
ZSF Series Hydrapulper

Application&Feature

1. Mainly used for removing light and heavy impurities of waste paper pulp in the process of waste paper pulping.
2. Energy-saving VOKES rotor can avoid breaking impurities.
3. Impurities can be discharged according to different specific gravity.
4. Excellent design of shell structure makes strong ability to collect impurities. Early remove impurities, reduce the pulper and following equipment burden.
5. Open front cover makes it easier to maintain.
6. Automatic control system make the process of impurities removal convenient and reliable.

MAIN Specification

Type	ZSF1	ZSF2	ZSF3
Normal Volume(m ³)	1.2	3	5
Consistency (%)		3-5	
Production Capacity(t/d)	35-45	60-80	100-140
Motor Power(kw)	45	75	132



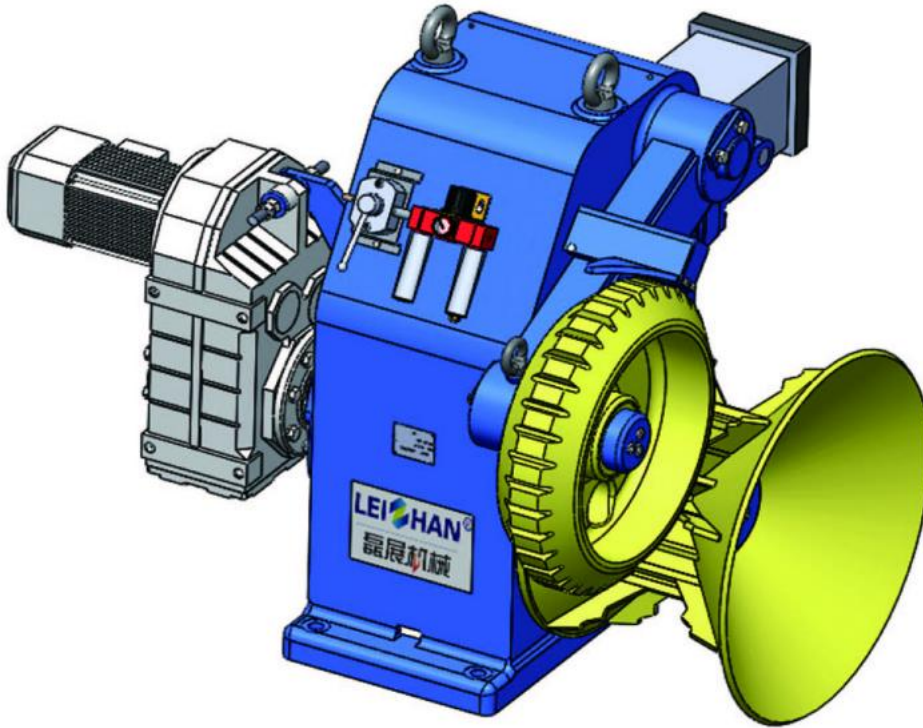
CXJ Series Hydrapurger

Application&Feature

1. It is mainly used in pulp and paper industry waste paper treatment process, processes the pulp which is pulped by high-consistency pulper, collects and concentrates impurities in the pulp, so as to reduce the burden on screening and cleaning equipment in the subsequent process.
2. Match with high-consistency pulper, it can shorten the processing cycle, avoid impurity refinement, and improve the production capacity of the pulping system.
3. The optimized shell design enhances the ability to capture impurities.

The main technical parameters

Model	CXJ1	CXJ2	CXJ3
Equipment volume: m ³	1	2.5	5
Throughput: L/min	8000-13000	15000-20000	22000-30000
Pulp inlet consistency: %		4-5	
Motor power: kw	37	75	160



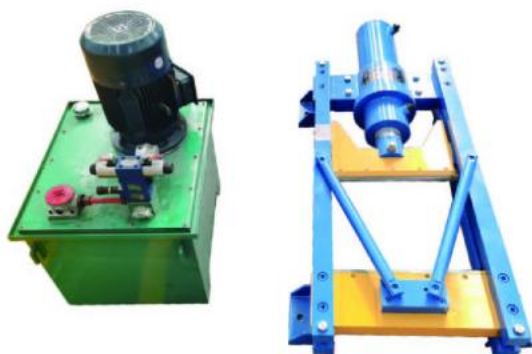
ZTS Series Ragger

Application&Feature

1. Mainly used for removing various kinds of twisting impurities in slurry like iron wire, string, plastic, cotton yarn, etc.
2. Motor directly connect with reducer, adjustable rotational speed, stable operation, smooth running.
3. Pinch roller of ragger is controlled by air cylinder, which can make sure the rope is pulled out with constant speed.

Main specification

Model Type	ZTS1
Speed(m/h)	0-60
Motor Power(kw)	4



Rope Cutter

Application&Feature

1. Used for cutting off the rope from ragger.
2. Longer moving route of cutter can avoid rope getting stuck.
3. Double hydraulic cylinders makes it has a strong cutting ability.

Main specification

Type	QSI-2
Working Pressure (mpa)	25
Hydraulic Cylinder Force(T)	2×50
Cutter Route (mm)	850
Pump Station Motor Power(KW)	11
Oil Tank Volume(L)	100



Grapple

Application&Feature

1. Mainly used for grabbing large impurities from sediment well.
2. The grapple has four "petal", pneumatic operation.



Grapple

Application&Feature

Directly grab huge amount of light impurities from the pulper's barrel, reduce deslagging time, greatly improve the pulper working efficiency.

ZSC Series, HD Series High Density Cleaner

Application&Feature

1. Mainly applied to remove all kinds of heavy impurities in paper pulp, like staples, stones, glasses, etc.
2. Volute Pulp inflow chamber, the eddy ability is strong and low pressure area subarea is obvious. This makes accepts and impurities separate thoroughly.
3. Wear resistance ceramics cone, long service life.
4. Specially designed long cone has small taper angle and fine cleaning efficiency.
5. Equipped with PLC control cabinet, convenient and easy to control, sufficiently discharging impurities.



ZSC Series High Density Cleaner

Type	ZSC2	ZSC3	ZSC4	ZSC5	ZSC6	ZSC7
Nominal Size	1000	2000	3500	5000	6500	9000
Throughput (l/min)	900-1400	1800-2600	3000-4500	4500-5800	5800-7500	8000-12000
Concentration Of Input Pulp (%)	2-5					
Pressure Of Input Pulp (mpa)	0.15-0.35					
Pressure Of Output Pulp (mpa)	0.1-0.25					
Pressure Of Backwash Water (mpa)	Pressure of Input pulp +0.02Mpa					
Discharging Model	Manual/Auto/Intermittence/Continuous					

HD Series High Density Cleaner

Type	HD2	HD3	HD4	HD5	HD6	HD7	HD8
Nominal Size	1000	1500	2000	3000	4000	5500	7500
Throughput(L/min)	800-1200	1200-1800	1800-2500	2500-3500	3500-4500	4500-6500	6500-8000
Concentration Of Input Pulp(%)	2-5						
Prssure Of Input Pulp(Mpa)	0.3						
Discharging Model	AUTO						



TZJ Series Slag Lifting Machine

Purpose and feature

1. Mainly used for dealing with the heavy impurities discharged from high density cleaner and low density cleaner. Separate the staple, small stone and gravel, etc from water.
2. Impurities precipitate in feed hopper; through internal rotating helix deliver impurities to reject nozzle, and send them to impurity collect box.

Main specification

Model	TZJ1	TZJ2
Diameter of Helix (mm)	260	360
Processing Capacity (m ³ /h)	9	16
Motor Power (kw)	0.75	1.1



ZDFD Series Single Effect Fiber Separator

Application&Feature

1. Mainly used for secondary breaking and screening of waste paper pulp, meanwhile, separating the light and heavy impurities from the pulp. It also can be used as tail pulp treatment equipment.
2. Specially designed impeller can break fiber effectively and it is good to separate and remove light and heavy impurities.
3. Automatically discharge according to requirement, run reliably.

Main specification

Type	ZDFD2	ZDFD3	ZDFD4	ZDFD5	ZDFD6	ZDFD7
Capacity(t/d)	50-70	80-120	180-250	280-360	300-400	400-500
Concentration Of Input Pulp (%)	2-4					
Pressure Of Input Pulp(mpa)	0.15-0.20					
Pressure Difference(mpa)	0.03-0.05					
Power Of Motor(kw)	45	55	75-90	160	200	280



JNS Series Energy-Saving Pressure Screen

Application and features

- 1、 Upflow design, bottom inlet, reduce heavy impurities and rotor and screen basket contact, prolong the life of the equipment
- 2、 Lower energy consumption, greatly reducing the power consumption of screening section
- 3、 Specially designed rotor, better screening effect

Main technical parameters

Model	0.9	1.5	2	3	4
Screen area (m ²)	1.07	1.81	2.26	3.28	4.0
Hole size(mm)	Ø1.6-Ø3.5				
Slot size (mm)	0.10-0.65				
Inlet consistency(%)	1-4				
Capacity(t/d)	180-220	220-360	300-450	440-660	600-800
Motor power(kw)	37-55	55-75	75-90	90-110	110-160



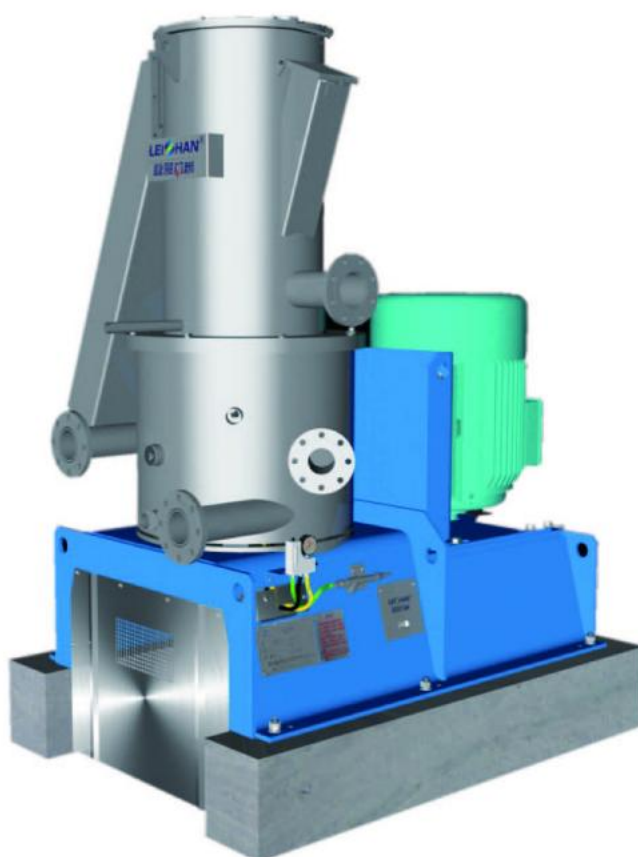
ZDF Series Single Fiber Separator

Application&Feature

1. Mainly used for secondary breaking and screening of waste paper pulp, meanwhile, separating the light and heavy impurities from pulp. It also can be used as tail pulp treatment equipment.
2. Specially designed cone structure can better break fiber, and can effectively separate and remove light and heavy impurities.
3. Automatically discharge according to requirement, run reliably.

Main specification

Type	ZDF2	ZDF3	ZDF4	ZDF5
Diameter Of Blade (mm)	Φ560	Φ720	Φ980	Φ1100
Product Capacity(t/d)	30-50	60-80	100-180	165-265
Pressure Of Input Pulp(mpa)	0.2-0.3			
Concentration Of Input Pulp (%)	2.5-4.0			
Power Of Motor(kw)	37	55	90	110



TD Series Tailing pulp pressure screen of coarse screen

Application&Feature

1. Mainly used for the deflaking of the tailing pulp and the separation of light impurities at the end of the waste paper pulp screening system;
2. Continuous operation, large capacity;
3. Adapted to high concentrations, close to 3%;
4. The reject discharging concentration is close to 30%;
5. Working under closed condition, the environment is clean
6. The fiber loss rate is low.

TD Main specification

Type	TD1	TD2
TyProduct Capacity(t/d)	60-80	80-100
Concentration Of Input Pulp(%)	<3	
Concentration Of Reject(%)	≈30	
MAX.working pressure(Mpa)	0.15	
Motor Power(kw)	75	90



PZ Series Reject Separator

Application&Feature

1. Used for fiber relief and impurities separate for tailing in the coarse screen system for waste paper pulp.
2. Specially designed rotor produce centrifugal force in the process of high-speed rotation and backwash water can relief pulp effectively, achieve pulp and impurities easily separate.
3. Closed Working condition, clean environment.
4. Openable upper cover makes maintenance easy and convenient.

Main Specification

Type	PZ2	PZ3
Capacity (t/d)	30-60	60-90
Motor Power (kw)	30-37	55



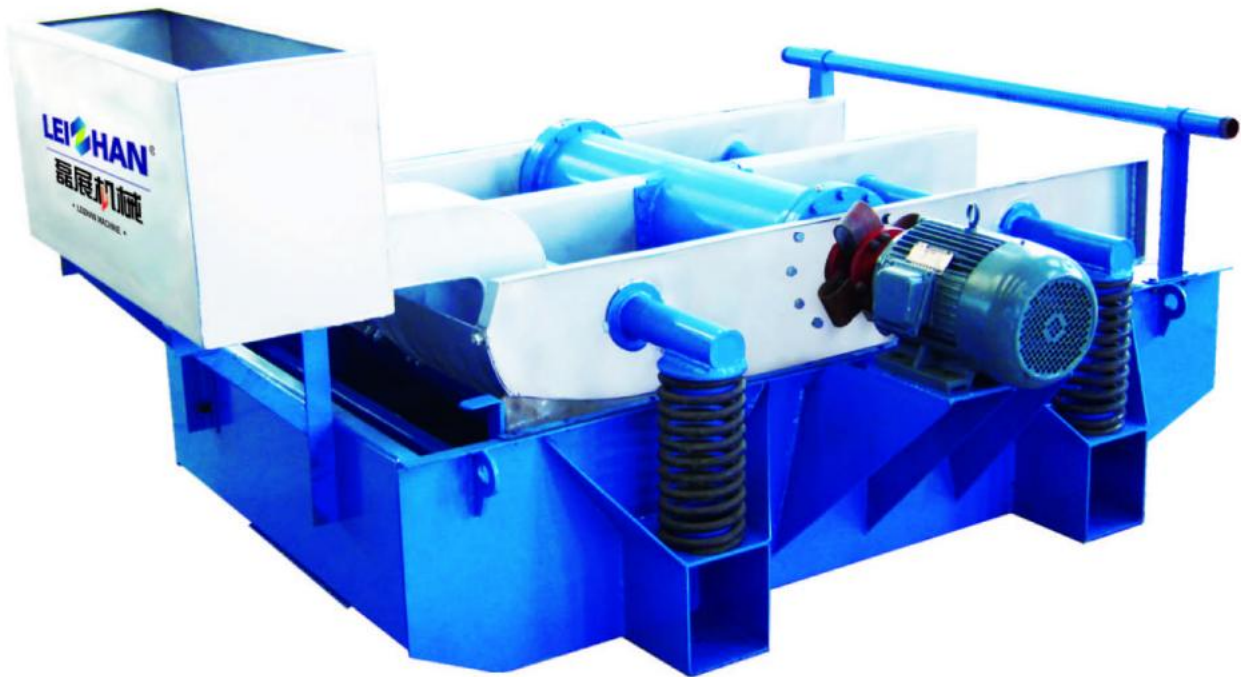
CSYTS Series Drum screen for Coarse Screening

Function and features:

1. It is mainly used in the end stage of coarse screening in the waste paper pulping process, to clean the larger light impurities in the pulp, and to separate the pulp from the light impurities.
2. The pulp enters the Drum Screen after passing through the preceding equipment, and the accept enters the next process after passing through the screen slot. The light impurities are gradually led to the outlet and discharged continuously under the action of high-pressure flushing water and the internal structure of the drum.
3. It has the advantages of good screening and separation effect, low power consumption, simple structure, convenient maintenance, high impurity purity and less fiber loss etc.
4. It is an replace product of Kangbi Screen, Reject Separator and Vibrating Screen.

Main technical parameters

Model	CSYTS850	CSYTS1500
Drum diameter(mm)	φ850	φ1500
Throughput (L/min)	3000-5000	6000-8000
Motor Power(KW)	4	15



ZSK Series Vibrating Screen

Application&Feature

1. Used for screening and removing various impurities in pulp suspension.
2. Specially designed air seal chamber makes self-cleaning ability of sieve plate very strong.
3. Perfect screening effect, stable running, low noise, easy maintenance.

Main Specification

Type	ZSK1	ZSK2	ZSK3
Screen Area (m ²)	1	2	3
Product Capacity Of Hole Screen (t/d)	7.5-25	12-50	25-75
Product Capacity Of Slot Screen (t/d)	3.5-7.5	7-15	11-25
Input Pulp Concentration Of Hole Screen (%)		1.0-1.5	
Input Pulp Concentration Of Slot Screen (%)		0.5-0.8	
Motor Power (kw)	2.2	3	4



LZ series Heavy Impurity Cleaner

Usage and feature

1. Mainly used for removing heavy impurities like gravel, scrap iron, dust and large ink particles from different kind of pulp.
2. The highest running consistency can reach 2%, reduce fiber loss, improve production capacity, decrease the needed segments and numbers of cleaner.
3. High cleaning efficiency, which avoids the accumulation of ash content in latter sections.
4. High reliability of operation; would not be blocked.

Main specification

Type	LZ450
Passing Capacity of Single Equipment(L/min)	450
Max Operating Temperature(°C)	70
Max Operating Pressure(Mpa)	0.4
Inlet Consistency (%)	≤2%
Washing Water Flow	20-60L/min



KH Series Low Density Cleaner

Application&Feature

1. Mainly used for removing heavy impurities in the pulp like gravel, scrap iron, dust and large ink particles.
2. Divided design, the cleaners can be divided into 3-4 parts, which make it easier for disassembly, assembly and replace.
3. Different deslagging ways: open and closed type impurity discharge to meet different working environment.
4. The bottom of cone adopts wear-resistant ceramics. It ensures the stable deslagging and long service life.

Main Specification

Type	KH-400	KH-600	KH-800	KH-1000	KH-1500
Rate Passing Capacity Of Single Equipment(l/min)	400	600	800	1000	1500
Inlet Consistency (%)	0.3-1	0.3-1.2	0.4-1.2	0.4-1.5	0.4-1.5
Pressure Of Inflow Pulp(mpa)	0.2-0.4	0.2-0.4	0.3-0.4	0.3-0.4	0.3-0.4
Diameter Of Deslagging Outlet(mm)	4-10	6-12	6-14	6-18	6-18



ZNS Series M.C. Pressure Screen

Application&Feature

1. Mainly used for coarse and fine screening of various waste paper pulp.
2. Many rotor blades, no winding, high efficient and energy-saving rotary rotor.
3. The machine can screen pulp normally under quite high consistency(2.5-4%). It reduces the amount of water cycle and system energy consumption in production process.
4. Heavy impurities discharge pipe makes sure the screen basket runs safely.
5. Advanced structure, sturdy and durable, convenient disassembly and assembly , low energy consumption, less loss of fiber.
6. Easy to operate, less malfunctions for continuous working, less maintenance cost.
7. Automatic oil injection device can reduce maintenance.
8. Seal water flow automatic detection alarm device makes sure the system runs safety.
9. Interlock system ensures the service life of equipment.

Main Specification

Type	ZNS0.3	ZNS0.6	ZNS0.9	ZNS1.2	ZNS1.5	ZNS2	ZNS2.5	ZNS3	ZNS4	ZNS6	
Screen Area(m ²)	0.3	0.6	0.9	1.2	1.5	2	2.5	3	4	6	
Screen Hole Size(mm)	φ1.6-φ3.5										
Screen Slot Size(mm)	0.10-0.55										
Production Capacity (t/d)	Screen Hole(t/d)	50-80	90-160	135-250	180-320	200-380	260-500	300-600	400-700	500-1000	800-1500
	Screen Slot(t/d)	30-50	60-100	90-150	120-190	140-230	200-300	250-400	300-450	350-730	500-1100
Inlet Pulp Consistency (%)	1-4										
Motor Power(kw)	22-55	30-75	37-90	45-110	55-132	75-160	90-200	90-220	132-280	250-400	



XZNS Series New Mid-Consistency Pressure screen

Function and features:

1. Pulp enters from the top of the pressure screen, By gravity to effectively remove heavy impurities, reduce wear on the rotor and screen basket, and prolong the service life;
2. Improve the screening efficiency, better removal of stickies;
3. Significantly reduce energy consumption, energy saving up to 25%;
4. Further optimization of screen basket size, stronger adaptability, lower thickening coefficient, can effectively reduce fiber loss and reduce the possibility of clogging;
5. Wider application, suitable for various raw materials;
6. Easier maintenance and less unplanned downtime.

Main technical parameters

Model		XZNS0.5	XZNS0.9	XZNS1.5	XZNS2.3	XZNS3.5	XZNS4.7
Nominal area (m ²)		0.5	0.88	1.49	2.3	3.53	4.67
Screen hole size (mm)		φ1.6-φ3.5					
Screen slot size (mm)		0.1-0.65					
Production capacity(T/D)	coarse screen	90-160	135-250	200-380	260-500	400-700	500-1000
	Fine screen	20-100	30-150	50-230	70-300	100-450	120-700
Inlet consistency (%)		1-4					
Motor power (KW)		11-45	22-75	30-110	45-160	55-250	90-355



FQJ Light Impurity Separator

Application&Feature

1. Used for dealing with light impurities and tailing in coarse screening section.
2. The main body is an inverse conical design, concave top structure, can form a strong vortex, forming a low pressure area in the top center and getting the light impurities and discharge them outside effectively.
3. Pulp outflow chamber of rotor is higher than undersurface of shell, forming a low pressure area around the rotor to collect heavy impurities. Under centrifugal force, the heavy impurities are thrown to the outermost of eddy and deposit in the groove that is outside the sieve plate for discharging. At the same time, it will reduce the wear to cutter and sieve plate, prolong the service life of them.

Main Specification

Type	FQJ0.4	FQJ0.8	FQJ1.5	FQJ2
Nominal Volume(m ³)	0.4	0.8	1.5	2
Treating Consistency(%)	0.5-2			
Capacity Of Production(t/d)	35-45	65-85	80-110	110-140
Power Of Motor(kw)	30	55	90	110



NLS Inflow Pressure Screen

Application&Feature

1. Small motor power, high production capacity, energy saving.
2. Inflow structure, low pulse, good effect of homogenate.
3. No gaskets companion flange pulp outlet, inwall is polished. Seamless connection of flow pipeline, no fiber hitching.
4. Automatic oil injection device, seal water detection alarm device ensure the safe running of equipment and reduce maintenance.
5. Advanced structure, sturdy and durable, convenient disassembly and assembly, simple operation, less malfunctions for continuous working, low maintenance cost.

Main Specification

Type	NLS0.6	NLS1	NLS1.5	NLS2	NLS3	NLS4	NLS5	NLS6	NLS7	NLS8	NLS9	NLS10	NLS11	
Screen Area (m ²)	0.6	1	1.5	2	3	4	5	6	7	8.5	9.6	10.5	12	
Concentration Of Input Pulp(%)	0.4-0.8													
Production Capacity (t/d)	Screen Hole(t/d)	30-60	70-130	110-160	140-260	250-400	260-520	350-600	420-700	500-900	600-1120	700-1200	770-1300	840-1400
	Screen Slot(t/d)	25-45	55-80	80-120	100-160	150-300	180-320	220-400	260-480	350-600	400-720	440-800	480-880	520-960
Pressure Of Inflow Pulp(mpa)	0.1-0.4													
Motor Power (kw)	7.5-15	22	30	37	45	55	75	90	110	110	132	160	160	



ZNP Series Disc Thickener

Application&Feature

1. Used to wash and thicken for low consistency slurry.
2. Combined disc type filter drum increases the filter area greatly. Less space requirement, but large production capacity.
3. Adopt stainless steel filter screen, long service life.
4. Reasonable structure for pulp cleaning and stripping. Filter screen is not easy to block. Dewatering capacity is good .

Main Specification

Type	ZNP2508	ZNP2510	ZNP2512	ZNP2514	ZNP2516	ZNP3510	ZNP3512	ZNP3514	ZNP3516
Diameter Of Disc(mm)	Φ2500					Φ3500			
Amount Of Disc(n)	8	10	12	14	16	10	12	14	16
Nominal Area(m ²)	60	75	90	105	120	150	180	210	240
Concentration Of Input Pulp (%)						0.8-1.2			
Concentration Of Output Pulp (%)						3.5-4.5			
Processing Capacity ONP(t/d)						0.9-1.2t/m ² /d			
Processing Capacity AOCC(t/d)						1.5-2.4t/m ² /d			
Motor Power(kw)			11	15		18.5		22	30



DF Disc Filter

Usage&Features

1. When used for white water recycling, high fiber recovery rate, realize water recycling, reduce water consumption, reduce waste and pollution when white water is discharged.
2. When used for pulp concentration, outlet concentration is high, up to 10%-14%.
3. The filter discs are with excellent structure, economical cost, high strength, easy maintenance, large effective filtering area and good filtering effect.
4. Special wear-resistant material distribution valve is with good sealing effect.
5. Compact structure, small area, large production capacity.
6. Good economic and social benefits.
7. Complete equipment models and specifications, according to different output requirements, change the filter area

Main specification

Type	DF3800	DF5700
Disc diameter (mm)	Φ3800	Φ5700
Disc numbers (n)	4-16	6-28
Filtration area per disc (m ²)	17.9	41.4
Filtration area per disc (m ²)	72-286	248-1159
Inlet consistency (%)	White water recovery: 0.2-0.6 Pulp thickened: 0.5-1.3	
Outlet consistency (%)	White water recovery: 4-6 Pulp thickened: 4-14	



ZDP Series Double Disc Refiner

Application&Feature

1. Used for beating and improving the beating degree of pulp to satisfy the papermaking demand.
2. It can be equipped with various tooth refiner plate. Suitable various raw materials like wood pulp, chemimechanical pulp, chemical pulp and waste paper pulp.

Main Specification

Type	Φ380	Φ450
Diameter Of Plate(mm)	380	450
Product Capacity(t/d)	6-20	8-60
Concentration Of Input Pulp (%)	3-5	
Pressure Of Input Pulp(mpa)	0.1-0.2	0.15-0.2
Motor Power(kw)	37-55	75-90-110



HXS Series Arc Screen

Application and features:

1. Fiber recovery: the treatment of white water in various pulping and paper making processes to recover fibers.
2. Thickening of accept pulp and tailings pulp in the screening and cleaning system;
3. White water purification: (1) White water purification of paper machine is used for spray water; (2) Purification and reuse of press water of paper machine.
4. Fiber fractionating: (1) Fractionating of long and short fibers. (2) Separation of large fiber bundles.
5. Separation of fiber and filler: (1) Washing the deinking pulp, (2) Washing the coated broken pulp.
6. Sewage treatment: remove solid suspended solids

Main Specification

Model:	HXS1	HXS2	HXS3
Area: m ²	1.26	2.52	3.78
Inlet pulp pressure: Mpa	0.15-0.25		
Inlet pulp concentration (%)	≤2.5		
Throughput (thicken pulp): m ³ /h	72-108	144-216	216-324
Throughput (white water recovery): m ³ /h	108-180	216-360	324-540
Screen slot (thicken pulp): mm	0.15-0.3		
Screen slot (white water recovery): mm	0.05-0.2		



RF Series Double Disc Refiner

Application&Feature

1. Mainly used for pulping, improving slurry beating degree to meet the paper making needs.
2. It can be installed various tooth refiner plates. Suitable various raw materials such as wood pulp, mechanical pulp, chemical pulp, waste paper pulp etc.
3. Adopt constant power control system , beating effect is stable.
4. Accurate retract mechanism, easy to control, the beating effect is good.

Main Specification

Type	RF20	RF26	RF34	RF42	RF52
Disc diameter(mm)	20-24	26-30	34-38	42-48	52-58
Range of op. consistency(%)	3.5-6.0				
Min.flow (L/Min 4%)	400	700	1400	2200	6000
Max.flow (L/Min 4%)	2400	4500	9000	16000	22000
Max.power (KW)	315	500	900	1700	3000



ZDJ Series Fiber Deflaker

Application&Feature

1. Mainly apply for pulping, which can be used with double disc refiner in series.
2. With features of long refining area, fully process finer, strong ability to cut fiber.
3. Rotor and stator have variety toothed. Suitable various raw materials.

Main Specification

Name	Parameter
Size Of Rotor(mm)	Φ350
Taper Degree Of Gear Ring(°)	60
Concentration Of Input Pulp (%)	3-5
Product Capacity(t/d)	20-30
Motor Power(kw)	55
Speed Of Motor(r/min)	970



SJJ FIBER DEFLAKER

Application&Feature

- 1、 The deflaker is suitable for various kinds of fiber pulp;
- 2、 For dispersing and deflaking fiber bundles in kraft pulp, mechanical pulp and all secondary fibers;
- 3、 For fiber deflaking in broken paper process;
- 4、 Strong acceleration and deceleration optimizes the deflaking effect of the fiber bundles;
- 5、 Optimized disc tooth structure can be used for a variety of pulp.

Main Specification

Deflaker model	SJJ-1	SJJ-2	SJJ-3
consistency (%)		3-6	
Max. Flow (L/Min)	1300	2600	5200
Max. Installation Power (KW)	90	200	400



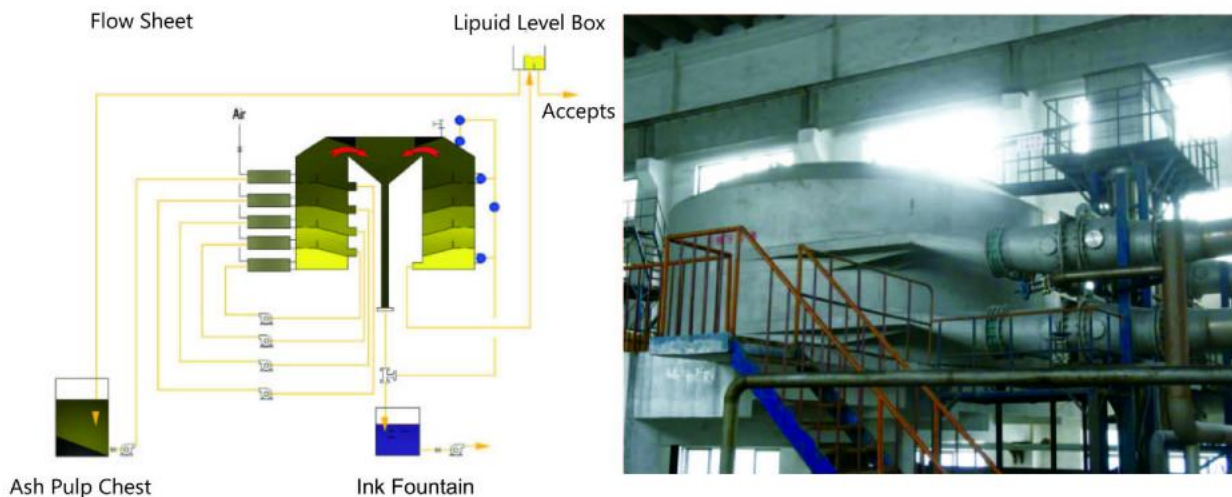
ZM Series Conical Refiner

Application&Feature

1. Primarily apply for continuously pulping wood pulp, mechanical pulp, cotton pulp, waste paper pulp etc. Improving the beating degree, which can be used with double disc refiner in series.
2. With features of long refining area, fully process finer, strong ability to cut fiber.
3. Shell' s lined is stainless steel for improving service life.
4. Adopt constant power control system, the beating effect is stable.
5. Rotor and stator have various tooth. Suitable various raw materials.

Main Specification

Rotor Size(mm)	Φ450	Φ460
Operation Concentration (%)	3-5	3-5
Product Capacity(t/d)	20-60	30-150
Motor Power(kw)	110	132-315



ZFM Flotation Deinking Machine

Application&Feature

1. Mainly applied to deink recycled pulp, it can effectively remove the ink, light impurities and stickies etc.
2. High efficient flotation, high consistency scum, less fiber loss.
3. Easy maintenance, low power consumption, low operation cost.
4. Only one set can achieve 4-5 stages of flotation, has advantages of less occupied area.

Main Specification

Type	ZFM1	ZMF2	ZFM3	ZFM4	ZFM5	ZFM6	ZFM7	ZFM8	ZFM9	ZFM10
Throughout Capacity (m ³ /h)	256	400	512	624	800	976	1152	1344	1456	1600
Layers	3-5									
Consistency (%)	1.1±0.1									
Production Capacity (t/d)	55-65	85-100	110-130	130-160	170-210	210-250	240-300	290-350	310-380	340-420
Consistency Of Ink(%)	2-3									



ZNG High-speed Stock Washer

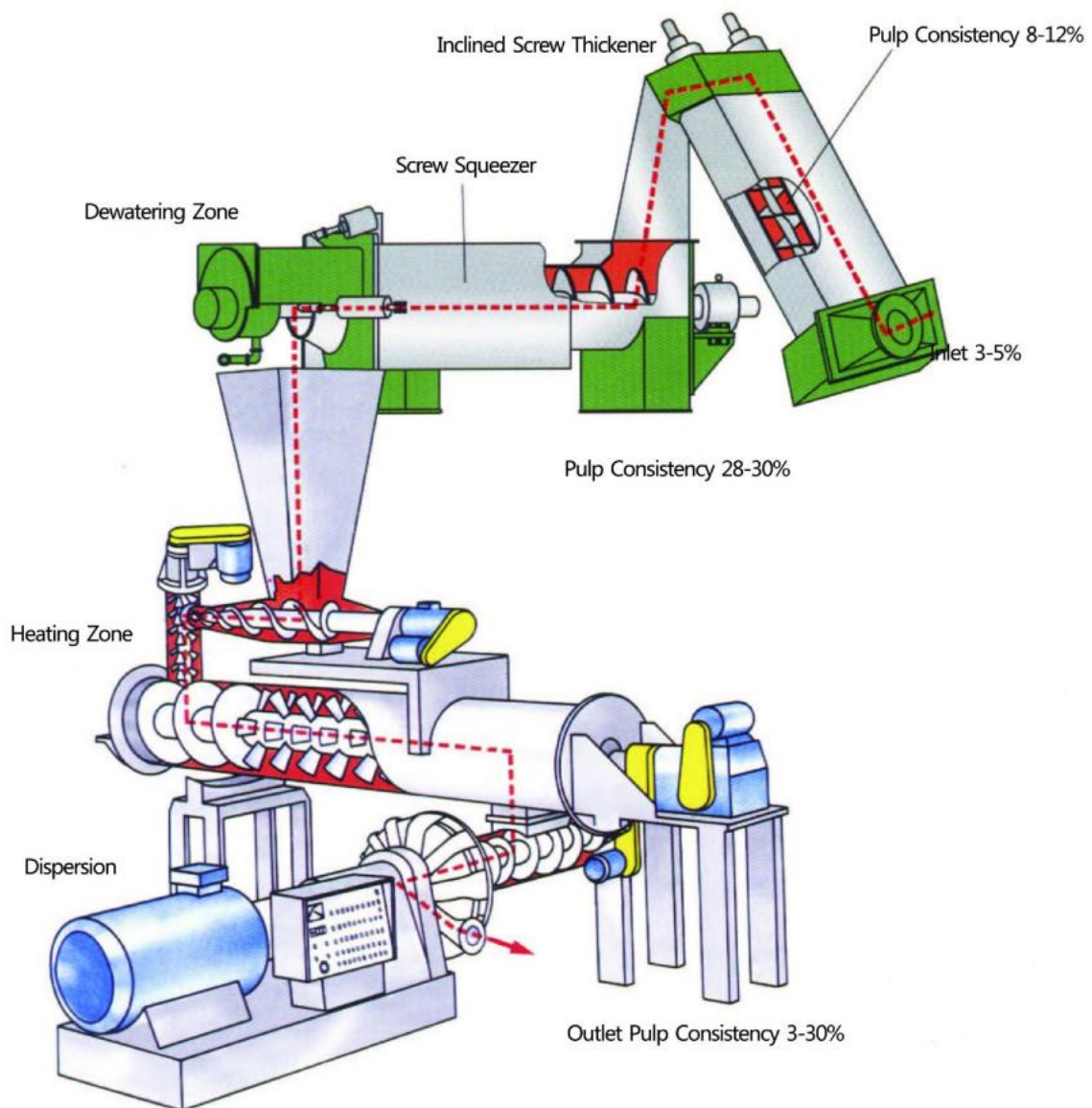
Application&Feature

1. Mainly used for washing and concentrating in various domestic and overseas waste recycled pulp, chemical pulp before or after bleaching. Removing ink particles, fillers and other small impurities from the slurry with high efficient.
2. High efficiency of impurity prolapse, high efficiency dewatering, very clean after wash the slurry.
3. Less occupied area, large production capacity, low power consumption.

Main Specification

Type		ZNG10	ZNG15	ZNG20	ZNG25
Working Width(mm)		1000	1500	2000	2500
Concentration Of Input Pulp (%)		0.8-1.5			
Concentration Of Output Pulp (%)		8-15			
Production Capacity(t/d)	MOW(t/d) (AOCC37#)	40-70	55-100	70-130	100-180
	ONP(t/d)	30-50	40-70	50-90	60-110
Ash Removal(%)		≥90			
Power Of Main Motor(kw)		30	37	55	75
Motor For Screw Conveyor(kw)		5.5	5.5	7.5	7.5

Dispersion System





ZNX Series Inclined Screw Thickener

Application&Feature

1. Mainly used for washing and thickening all kinds of paper pulp.
2. Special brush which is synchronized running with screw can prevent filter pore from blocking, good dehydration effect.
3. Dehydration by gravity, low power consumption.

Main Specification

Type	ZNX1	ZNX2	ZNX3	ZNX8	ZNX9	ZNX12
Nominal Filtrating Area(m ²)	1×1	1×2	1×3	1.5×2	1.5×3	2×3
Concentration Of Input Pulp (%)	3-4					
Concentration Of Output Pulp (%)	10-14					
Production Capacity (t/d)	12-20	25-40	35-60	40-60	60-90	100-130
Motor Power (kw)	4	4×2	4×3	7.5×2	7.5×3	11×3



LXYZ Series Screw Press

Application&Feature

1. Mainly suitable for washing and thickening all kinds of paper pulp.
2. For screw shaft, the compression ratio is axially distributed reasonably, thickening effect is good.
3. In discharge side, fitted with inner dewatering assembly with holes, which can efficiently secure uniformly of dewatering of inside and outside pulp layer.
4. Pneumatic back-push assembly can guarantee the stability and adjustment of discharge consistency.
5. Special screw structure in outlet, easy to maintain.

Main Specification

Type	LXYZ 453	LXYZ 454	LXYZ 604	LXYZ 754	LXYZ 756	LXYZ 1005	LXYZ 1006	LXYZ 1008	LXYZ 1407	LXYZ 1410	LXYZ 1710	LXYZ 1910
Screw diameter (mm)	450	450	600	750	750	1000	1000	1000	1400	1400	1700	1900
Capacity(t/d)	40-60	60-80	80-100	100-150	150-200	200-250	250-300	300-400	400-550	550-700	700-850	850-950
Inlet consistency (%)	10-14											
outlet consistency (%)	25-35											
Max.power(kw)	90	132	160	250	315	350	400	450	500	710	800	1000



ZRP Series Disc Disperser

Application&Feature

1. Mainly used to disperse the stickies, grease, wax, plastic, rubber and ink particles and other hot melt impurities from the paper pulp.
2. Reasonable disc tooth structure ensure an effective dispersion to gooey, ink particles, etc.
3. Automatic lubrication system ensures a stable running of equipment.
4. Matching with different fluted disc according to the different type of stock.

Main Specification

Type	ZRP1	ZRP2	ZRP3
Nominal Diameter (mm)	Φ450	Φ710	Φ1050
Concentration Of Input Pulp (%)	25-30		
Concentration Of Output Pulp (%)	4-12		
	25-30		
Treating Temperature(℃)	110-120 (AOCC)		
	80-90(ONP)		
Production Capacity (t/d)	30-70	80-300	280-600
Power Of Main Motor(kw)	110-200	280-800	630-1250
Power Of Feeding Screw(kw)	5.5	5.5-11	11-18.5
Power Of Plug Screw(kw)	15	22-45	55-90
Power Of Fluffer(kw)	5.5	5.5-11	15-18.5
Power Of Heater(kw)	7.5	7.5-22	30-45



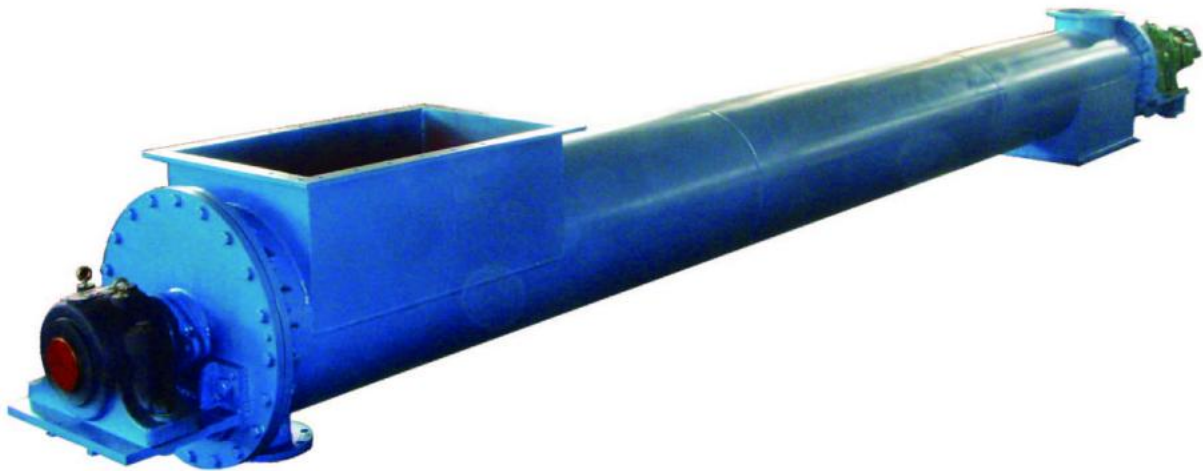
ZDR Series Kneader

Application&Feature

1. Mainly used to disperse the stickies, grease, wax, plastic, rubber and ink particles and other hot melt impurities from the paper pulp.
2. Special designed stator and rotor can effectively knead stock as well as disperse hot melt impurities, at the same time can't reduce the freeness of the stock.
3. Automatic control of discharging can guarantee slurry dispersed evenly.

Main Specification

Type	ZDR2	ZDR3	ZDR4	ZDR5
Nominal Diameter (mm)	Φ500	Φ600	Φ700	Φ800
Consistency (%)	≥28			
Treating Temperature(°C)	90-100			
Production Capacity (t/d)	30-45	60-90	100-150	160-220
Motor Power(kw)	110	185	250	315



ZLS Series Heating Screw Conveyor

Application&Feature

1. Mainly used for conveying the concentrated pulp into the high consistency mixer, at the same time heating the slurry and adding bleach solution.
2. Optimization of the spiral blade can ensure the high consistency pulp convey, while keep loose state, which is advantage to the pulp evenly heating.
3. Reasonable heating device row with special designed anti-push spiral blades can assure slurry uniform heating while save the steam consumption.
4. Frequency control can be easily adjusted to match with other capability of equipment.

Main Specification

Type	ZLS1	ZLS2	ZLS3	ZLS4
Diameter(mm)	Φ500	Φ600	Φ700	Φ800
Consistency (%)	32-35			
Production Capacity (t/d)	30-70	80-120	140-170	180-230
Motor Power (kw)	7.5	15	22	30



JB Series Agitator

Application&Feature

1. Mainly used to stir pulp cyclically in chest to maintain the pulp liquid in suspending condition, which ensure the pulp components even distribution.
2. Advanced blade design, strong thrust. It can be adjusted the angle according to the concentration of the slurry.

Main Specification

Model	JB500	JB600	JB700	JB750	JB800	JB850	JB1000	JB1150	JB1250	JB1300	JB1600	JB2000
Vane Diameter(mm)	Φ500	Φ600	Φ700	Φ750	Φ800	Φ850	Φ1000	Φ1150	Φ1250	Φ1300	Φ1600	Φ2000
Consistency(%)	≤5											
Chest Volume(m ³)	20-50	30-60	35-70	40-75	45-80	50-85	70-110	80-120	90-140	100-150	120-180	150-230
Motor Power(kw)	5.5/7.5	5.5/7.5/11	7.5/11/15	7.5/11/15	11/15	11/15/18.5	15/18.5/22/30	18.5/22/30	22/30/37	30/37/45	37/45/75/90	90/110



HD Series Sludge Dewatering Machine

Application&Feature

Used to concentrate sludge in paper making industry, municipal engineering, etc.

Main Specification

Type	HD-1	HD-2	HD-3	HD-4	Note
Width Of Net (mm)	1500	2000	2500	3000	
Speed Of Belt (m/min)	1.5-8				Pneumatic (manual) adjust deviation, pneumatic (manual) tensioner, anticorrosive processing.
Concentration Of Input Pulp (%)	1.5-4				
Concentration Of Output Pulp (%)	20-30				
Pressure Of Washing Water(mpa)	≥ 0.5				
Quantity Of Mud (t/d)	110- 280	150-380	210-480	260-400	
Motor Power(kw)	2.2+1.1	3.0+1.5	4.0+2.2	5.5+2.2	



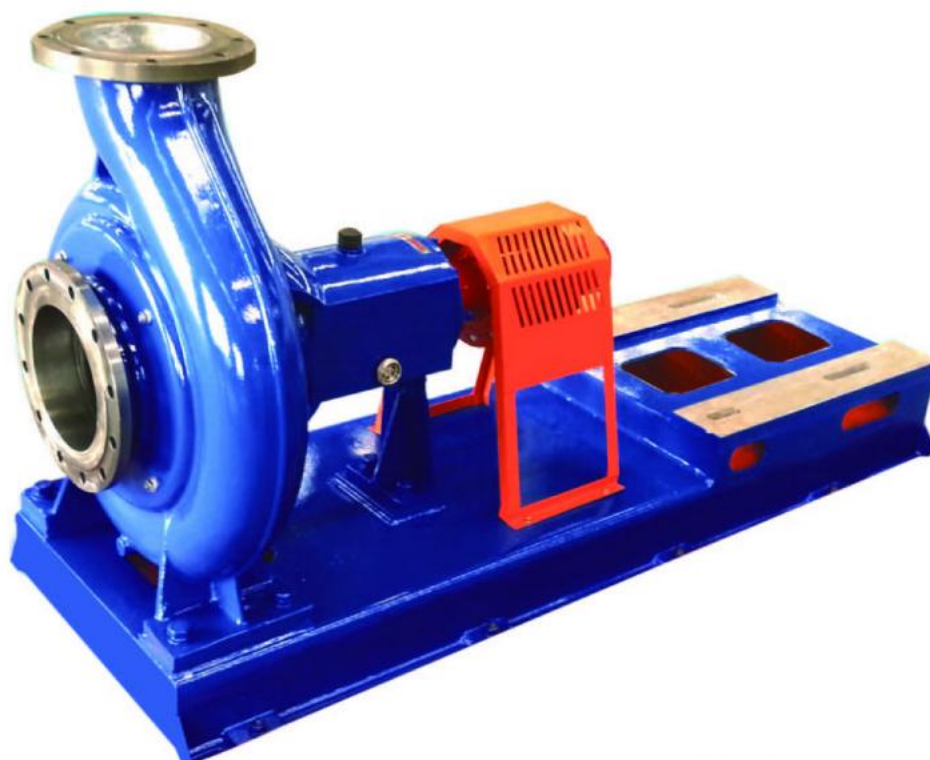
ZZJZJ Series Heavy Slag Extruder

Function and features:

1. It is mainly used for dewatering and thickening of fine screen tailings and low density cleaner tailings in the paper pulping industry.
2. Small occupied area
3. Low operating cost, unattended operation.
4. Strong concentration adaptability.

Main technical parameters

Model:	ZZJZJ260	ZZJZJ400
Nominal Diameter of Screen Drum:mm	Φ260	Φ400
Consistency of Input Pulp: %	1.5-7	
Consistency of Output Pulp: %	30-50	
Production Capacity: t/d	15-20	20-30
Motor Power: kw	7.5/11	22



Pulp Pump

Application&Feature

Mainly used for transporting liquid or solid materials in paper making, coal, mine, electric power food, urban sewage industry, etc.

Main Specification

Type	Scope		Suction height (m)	Speed (r / min)	Efficiency (%)	Equipped with electric motor type and power	Medium volume concentration (%)	Impeller diameter (mm)
	flow rate (m ³ /h)	lifts (m)						
80-50-6	30-60	7-5	2.5	1420	68	Y100L ₁ -2.2	4-6	156
80-35-6	21-40	7-5		1400	68	Y90L-1.5		156
80-60-12	35-70	14-12	2.5	1440	65	Y112M-4	4-6	210
80-65-15	40-80	16-14		1440	65	Y132S-5.5		225
80-50-20	30-60	23-21	6	1440	60	Y132S-5.5	4-6	258
80-55-25	35-70	26-24		1440	60	Y132M-7.5		285
80-60-35	35-70	37-33	6	1460	60	Y160M-11	4-6	323
80-70-40	40-80	41-37		1460	60	Y160L-15		340
80-80-45	55-100	44-40		1460	60	Y180M-18.5		353
80-100-40	60-120	44-36		1470	60	Y180L-22		353
100-90-18	55-110	19-17	6	1440	70	Y132M-7.5	4-6	242
100-110-20	65-130	23-21		1460	72	Y160M-11		258
100-80-20	50-100	21-19	6	1440	68	Y132M-7.5	4-6	258
100-80-25	50-100	29-25		1460	68	Y160M-11		285
100-120-27	82-140	28.5-24.5		1460	68	Y160L-15		285
100-70-30	40-80	32-28	6	1460	60	Y160M-11	4-6	296
100-80-35	50-100	37-33		1460	60	Y160L-15		320
100-90-40	55-110	43-37		1470	60	Y180M-18.5		340
100-150-37	110-180	40.6-34.5		1470	68	Y180L-22		340
100-150-16	90-180	19-17	6	970	68	Y180L-15	4-6	358
100-160-30	95-190	32-28		1470	68	Y180L-22		310
100-180-35	110-220	37-32		1470	68	Y200L-30		330
100-200-40	120-240	43-37		1480	68	Y225S-37		350
100-130-11	80-160	12-9		970	65	Y160M-7.5		300
100-100-22	60-120	23-21	6	970	60	Y160L-11	4-6	385
100-130-45	80-160	49-43		1470	60	Y200L-30		365
100-140-50	85-170	55-48		1480	60	Y225S-37		390
100-200-55	120-240	58-51		1480	60	Y250M-55		399
100-260-45	160-300	50-41.5		1480	69	Y225M-45		390
100-200-52	135-270	55-46		1480	62	Y250M-55		399
150-160-15	95-190	15-12	6	970	75	Y160L-11	4-6	320
150-200-25	120-240	25.5-22.5		1470	75	Y180L-22		290
150-220-30	130-260	32-28		1470	75	Y200L-30		310
150-200-20	120-240	21.5-18.5		1470	75	Y180M-18.5		275
150-300-25	180-360	26.5-23		1470	75	Y200L-30		310
150-180-12	140-230	13-10		970	75	Y160L-11		320

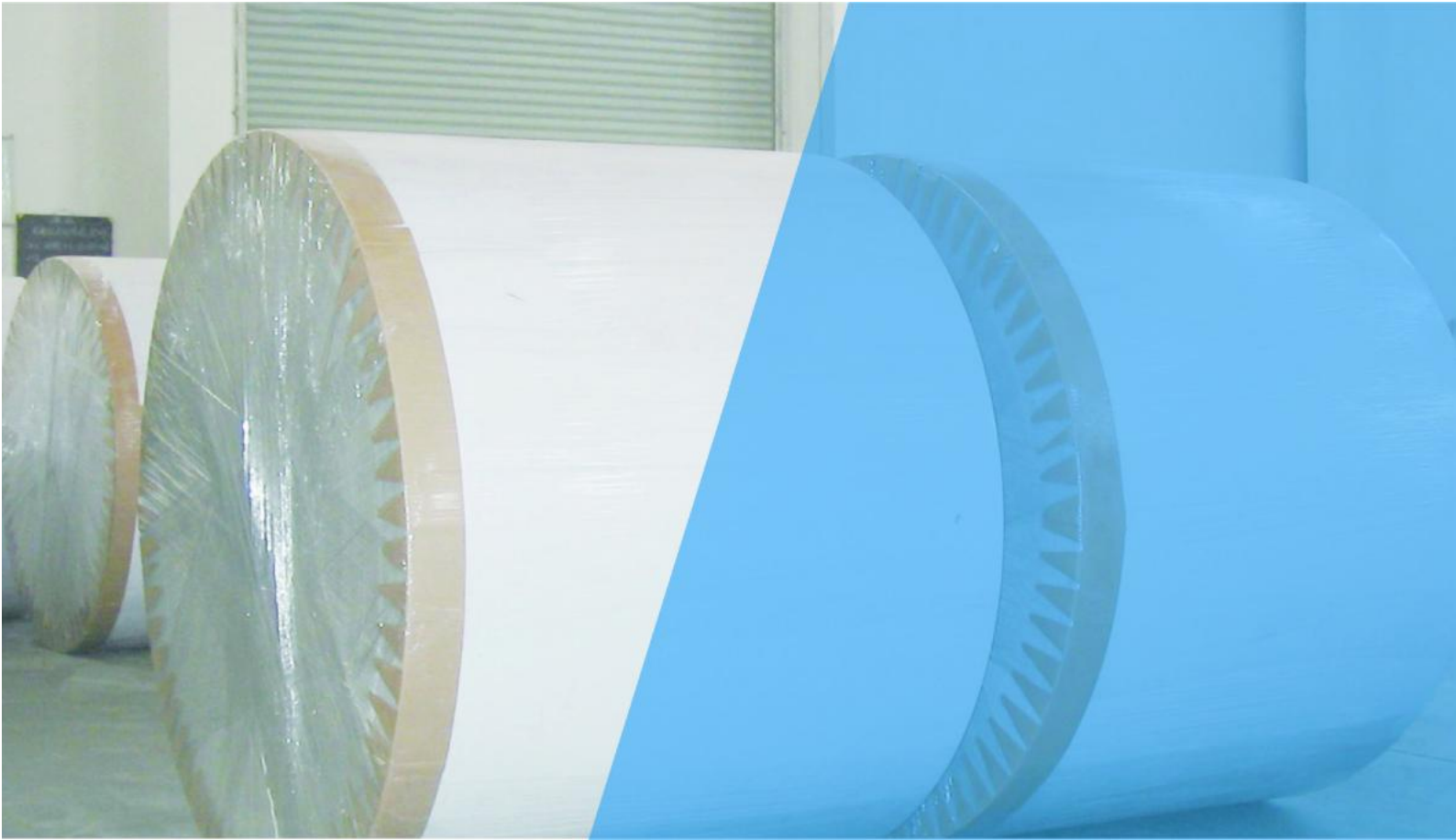
Main Specification

150 - 200 - 14	120-240	13-11	5	970	70	Y160L-11	4-6	318	
150 - 240 - 14	145-290	14-11	5	970	70	Y180L-15	4-6	323	
150 - 210 - 16	125-250	15-13		970	70	Y180L-15		340	
150 - 260 - 16	155-310	15-13		970	70	Y200L1-18.5		340	
150 - 300 - 30	180-360	29.5-26		1480	72	Y225S-37		318	
150 - 370 - 30	220-440	29.5-26		1480	72	Y225M-45		323	
150 - 320 - 35	190-380	36-32		1480	72	Y250M-45		340	
150 - 400 - 35	240-480	34-29		1480	72	Y250M-55		340	
150 - 360 - 35	210-450	38.5-31.5		1480	72	Y250M-55		340	
125 - 130 - 38	80-160	40-35.5	6	1470	68	Y180L-22		4-6	332
125 - 120 - 32	70-140	34-29		1470	68	Y180M-18.5			310
125 - 90 - 17	55-110	18-15.5		970	68	Y160M-7.5	340		
125 - 200 - 35	130-230	40-31.5		1470	70	Y200L-30	340		
150 - 300 - 15	180-360	16-14	5	970	75	Y200L1-18.5	4-6	350	
150 - 280 - 12	170-340	13-11		970	75	Y180L-15		315	
150 - 430 - 32	260-520	34-29		1480	75	Y250M-55		340	
150 - 400 - 28	240-480	30-25		1480	75	Y225M-45		315	
150 - 340 - 25	210-430	27-20		1480	75	Y225S-37		300	
150 - 360 - 36	215-430	39-32		1480	75	Y250M-55		350	
150 - 380 - 16	234-430	18.3-14.5		970	77	Y200L2-22		350	
150 - 470 - 35	340-550	39.5-32		1480	75	Y280S-75		350	
200 - 370 - 14	220-440	15-13	5	970	77	Y200L2-22		4-6	350
200 - 350 - 12	210-420	13-11		970	77	Y200L1-18.5		335	
200 - 570 - 34	340-680	35-30		1480	77	Y280S-75		350	
200 - 500 - 27	310-620	28-24		1480	77	Y250M-55		316	
200 - 330 - 17	200-420	19-15		970	77	Y200L2-22		350	
200 - 700 - 32	550-780	37-29		1480	77	Y280M-90		354	
250 - 800 - 25	480-960	26.5-23	5	1480	76	Y280M-90	4-6	330	
250 - 500 - 10	300-600	11-9		970	76	Y200L2-22		320	
250 - 700 - 22	405-840	25-17		1480	76	Y280S-75		330	
200 - 500 - 43	300-600	44-40		1480	75	Y280M-90	4-6	384	
200 - 460 - 37	280-550	39-34		1480	72	Y280S-75		356	
200 - 350 - 43	225-420	47-39		1480	72	Y280S-75		382	
200 - 600 - 14	360-720	15-12	5	1480	76	Y225S-37	4-6	260	
200 - 400 - 6	240-480	7-5		970	76	Y160L-11		260	
200 - 500 - 12	300-660	15-9		1470	76	Y200L-30		260	
200 - 330 - 5	240-400	6-4		970	75	Y160M-7.5		255	
200 - 250 - 5	150-300	6-4		970	76	Y132M2-5.5		233	

Main Specification

150-130-5	80-160	39-32	5	970	76	Y132S-3	4-6	223
250-1000-32	700-1150	34-28	1.5	1480	75	Y315M-132	4-6	357
250-935-28	655-1080	30-24		1480	75	Y315S-110		345
250-660-14	460-760	15-10		980	75	Y280S-45		357
250-620-12	435-715	13-8		980	75	Y250M-37		345
250-1000-50	700-1150	52-48	1.5	1480	78	Y355M1-220	4-6	426
250-950-45	665-1100	47-42		1480	78	Y315L2-200		410
250-900-40	630-1035	42-38		1480	78	Y315L1-160		390
250-850-36	600-980	38-33		1480	78	Y315M-132		370
250-660-22	460-760	24-20		980	78	Y315S-75		426
250-630-20	440-730	21-17		980	78	Y280M-55		410
250-600-18	420-690	19-15		980	78	Y280S-45		390
250-1300-32	910-1500	34-30	1.5	1480	78	Y315L2-200	4-6	370
300-1200-29	840-1380	31-27		1480	78	Y315L1-160		350
300-1150-26	800-1320	28-24		1480	78	Y315M-132		335
300-860-14	600-990	15-12		980	78	Y280M-55		370
300-820-13	575-940	14-11		980	78	Y280S-45		350
300-780-11	545-900	12-9		980	78	Y250M-37		335
300-1300-50	910-1500	52-48	1.5	1480	76	Y355L1-280		434
300-1200-42	840-1380	44-40		1480	76	Y355M1-220		410
300-1100-36	770-1270	38-33		1480	76	Y315L2-200		380
300-860-22	600-990	24-20		980	76	Y315M-90		434
300-800-18	560-920	19-16		980	76	Y315S-75	410	
300-730-16	510-840	17-14		980	76	Y280M-55	380	
350-1600-32	1120-1840	34-30	3.5	980	79	Y355L1-220	4-6	528
350-1500-28	1050-1725	30-26		980	79	Y355M2-185		495
350-1400-25	980-1610	27-23		980	79	Y355M1-160		467
350-1200-18	840-1380	20-16		740	79	Y315L2-110		528
400-2000-32	1400-2300	34-30	2.5	980	80	JS2-400M3-280		538
400-1840-27	1290-2110	29-25		980	80	Y355L1-220	4-6	495
400-1740-24	1220-2000	26-22		980	80	Y355M2-185		466
400-1510-18	1060-1740	20-16		740	80	Y315M2-132		538
200-500-70	300-600	73-66	5	1480	72	Y355L1-160		450
200-460-60	276-552	62-56		1480	72	Y315M-132		420
200-425-50	255-510	53-46		1480	70	Y315S-110	390	





PAPER MACHINE

ZHENGZHOU LEIZHAN
TECHNOLOGY
PAPER MACHINERY CO., LTD





Kraft Liner Board Machine

Paper Grade	Kraft Paperboard
Trimmed Width(mm)	1880-5800
Basis Weight(g/m ²)	80-220
Operating Speed(m/min)	150-800
Production Capacity(t/d)	45-750



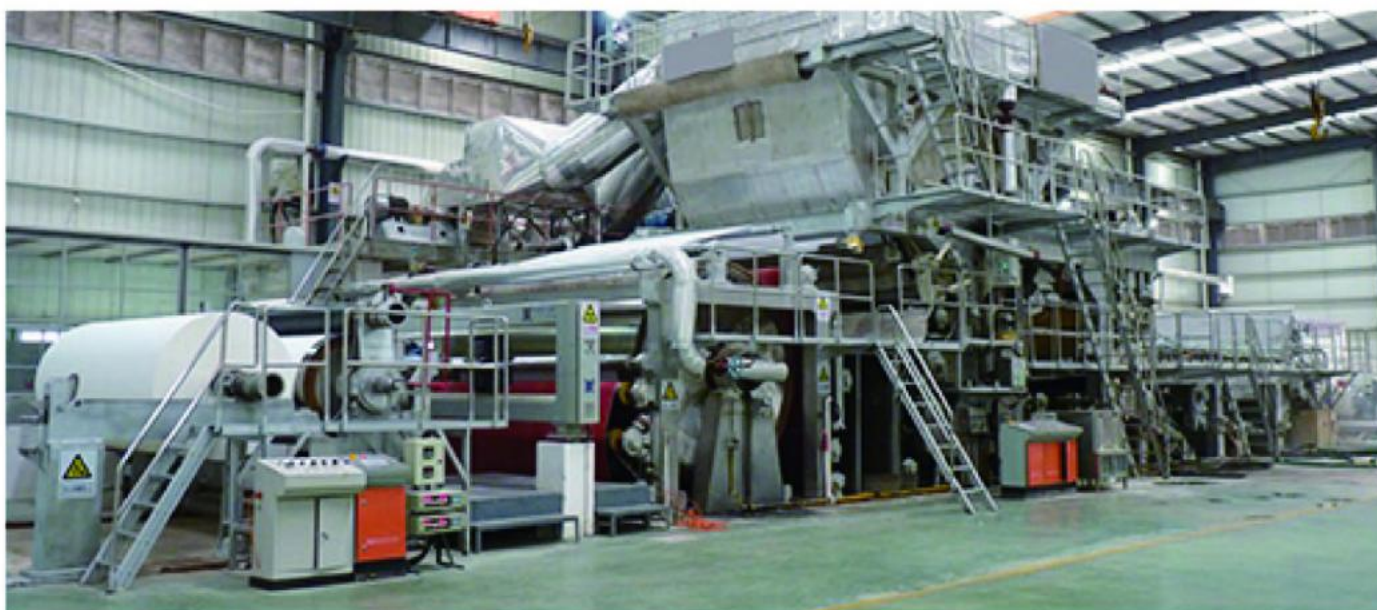
Corrugated Paper Machine

Paper Grade	High-strength Corrugated Paper
Trimmed Width(mm)	1575-5800
Basis Weight(g/m ²)	60-150
Operating Speed(m/min)	100-800
Production Capacity(t/d)	15-500



High-grade Cultural Paper Machine

Paper Grade	High-grade Fine Paper,Carbonless Paper
Trimmed Width(mm)	1880-3750
Basis Weight(g/m ²)	40-80
Operating Speed(m/min)	200-1200
Production Capacity(t/d)	20-270



Tissue Paper Making Machine

Paper Grade	High-grade Household paper
Trimmed Width(mm)	1575-3600
Basis Weight(g/m ²)	13-40
Operating Speed(m/min)	180-800
Production Capacity(t/d)	5-50



Coating Board Paper Machine

Paper Grade	Coating Board Paper
Trimmed Width(mm)	2400-6600
Basis Weight(g/m ²)	200-350
Operating Speed(m/min)	200-600
Production Capacity(t/d)	200-1400



Cylinder Mould Type Tube Paper Machine

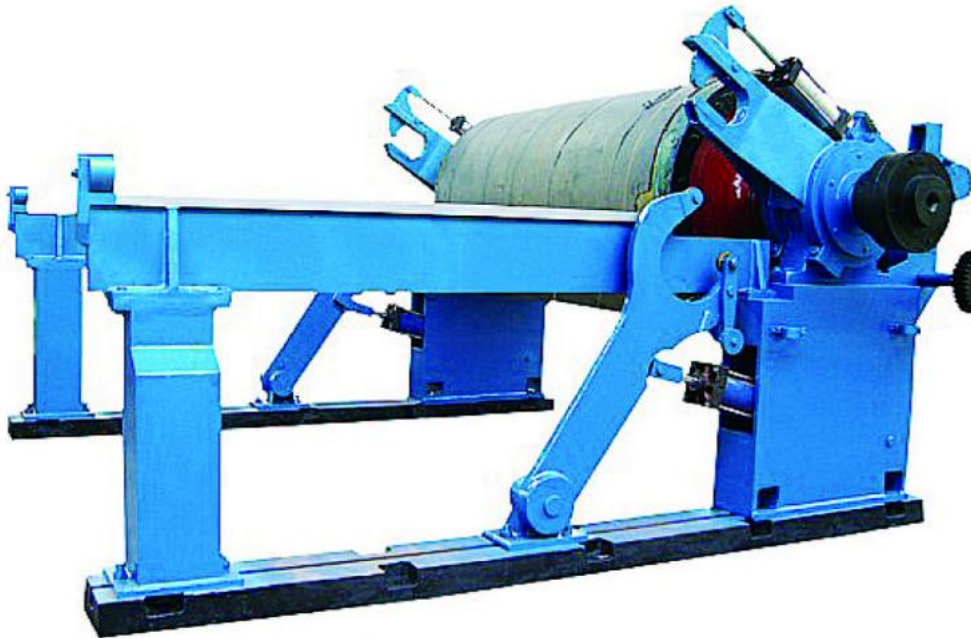
Paper Grade	Yarn Tube Paper
Trimmed Width(mm)	1575-4800
Basis Weight(g/m ²)	350-1000
Operating Speed(m/min)	80-200
Production Capacity(t/d)	50-500



Overfeed Rewinder

Trimmed Width(mm)	1575-6000
Max Working Speed(m/min)	1500

Paper Machine Spare Parts



Reeling Machine



Sizing Machine



Calender

Paper Machine Spare Parts



Dryer Cylinder



Press Roll



Cylinder Mold



Doctor Holder



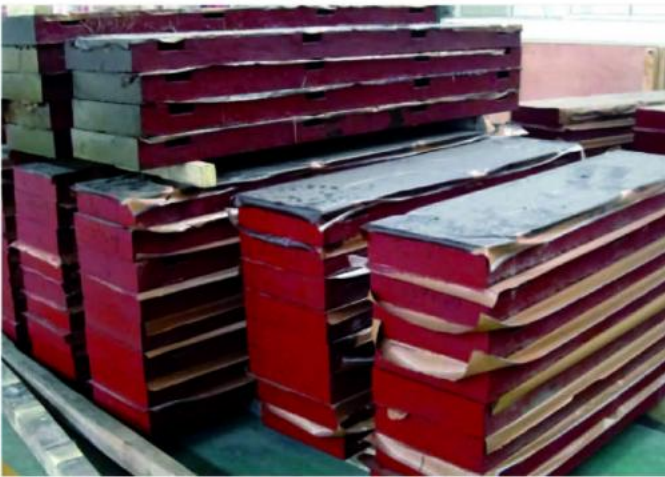
Stretcher



Felt Leading Roll



Gear



Foundation Plate



Felt



Boiler



Vacuum Pump



Doctor Blade

Part Of Customer List

Anhui Province
Anhui Hefei Hongtu Color Printing Co.,Ltd.
Anhui Zhaolong Paper Industry Co.,Ltd.
Anhui Guzhen Dongfang Shoes Co.,Ltd.
Anhui Taihe Hongsheng Paper Industry Co.,Ltd.
Chaohu Gaolin Recycled Paper Co., Ltd
Suzhou Yongxing paper Industry Co.,Ltd.
Gansu Province
Gansu Linxia Paper Mill.
Gansu Lanzhou Lixiang Paper Industry Co.,Ltd.
Guangdong Province
Guangdong Shantou Yaode Paper Industry Co.,Ltd.
Guangdong Foshan Nanhai Lantian Paper Co.,Ltd.
Guangzhou Nanya Pulp Making Molding Machine Co.,Ltd.
Foshan Lantian Paper Industry Co.,Ltd.
Dongguan Kunbaoda Packing Machine Co.,Ltd.
Guizhou Province
Guizhou Dongyang Paper Industry Co.,Ltd.
Xingyi Jinxin Paper Industry Co.,Ltd.
Hebei Province
Hebei Yutian Fuxing Paper Mill Co.,Ltd.
Hebei Shahe Taihang Paper Industry Co.,Ltd.
Hebei Luancheng Zhongjing Paper Industry Co.,Ltd.
Hebei Jifa Paper Industry Co.,Ltd.
Hebei Huabang Paper Industry Co.,Ltd.
Hebei Xingrong Paper Industry Co.,Ltd.
Hebei Shunda Paper Industry Co.,Ltd.
Hebei Huacheng Paper Industry Co.,Ltd
Hebei Handan Xinbo Paper Mill
Hebei Qiu County Paper Mill
Hebei zhaoxian Sanyuan Paper Mill
Hebei Baoding Pengda Paper Industry Co.,Ltd.
Hebei Hejian Sanxing Paper Mill
Hebei Shahe Dongfang Paper Industry Co.,Ltd.
Hebei Gaocheng Hongjia Paper Product Factory.
Hebei Baoding Dabei Paper Mill
Hebei Baoding Fengshou Paper Industry Co.,Ltd
Hebei Mancheng Hua Paper Co.,Ltd
Baoding Dingtai Paper Co.,Ltd.
Baoding Cement Pipe Co., Ltd

Baoding Dayi Paper Co.,Ltd.
Baoding Chensong Paper Co.,Ltd.
Baoding Qunguan Paper Co.,Ltd.
Baoding Aojie Paper Mill Co.,Ltd.
Baoding Chengxin Paper Co.,Ltd.
Baoding Mancheng Innovative Paper Mill
Baoding Mancheng County Tiaoshan Camp Fuli Paper Mill
Baoding Zhuqiang Paper Mill
Baoding New Urban Area Fuli Paper Mill
Mancheng Fumin Paper Co.,Ltd.
Mancheng Guoli Paper Mill
Mancheng Hengda Paper Mill Co.,Ltd.
Tangshan Yufeng Paper Co.,Ltd.
Baixiang Senchang Paper Co.,Ltd.
Jinzhou Chenhong Paper Co.,Ltd.
Shahe Hengsen Co.,Ltd.
Yutian Dazhong Baolai Paper Co.,Ltd.
Henan Province
Henan Longyuan Paper Co.,Ltd.
Henan Hongwei Renewable Resources Technology Co.,Ltd.
Henan Yongwei Anfang Co.,Ltd.
Henan Dengfeng Fuxing Paper Co.,Ltd.
Henan Shangqiu Wanli Paper Co.,Ltd.
Henan Xinmi Hongyuan Paper Co.,Ltd.
Henan Puyang Yongsheng Paper Co.,Ltd.
Henan Xiping Yinge Paper Co.,Ltd.
Henan Tianhong Paper Co.,Ltd.
Henan Hongteng Paper Co.,Ltd.
Henan Anyang Xinwang Paper Co.,Ltd.
Henan Tianhong Paper Co.,Ltd.
Henan Lankao Guzhen Mamu Paper Mill.
Henan Linzhou Zhongle Paper Mill
Zhengzhou Hengfeng Paper Co.,Ltd.
Zhengzhou Dongsheng Paper Co.,Ltd.
Zhengzhou Kanghua Paper Co.,Ltd.
Zhengzhou Dongxin Paper Co.,Ltd.
Zhengzhou Huafeng Gongmao Paper Co.,Ltd.
Zhengzhou Pufa Paper Co.,Ltd.
Zhengzhou Yongguang Paper Co.,Ltd.
Zhengzhou Shuofeng Paper Co.,Ltd.
Xinxiang New Asia Group Paper Co., Ltd
Xinxiang Hongtai Paper Co.,Ltd.
Xinxiang Xingtai Paper Co.,Ltd.
Xinxiang Huaxin Paper Mill
Xinxiang Zhonghui Paper Co.,Ltd.
Xinmi Fangyuan Paper Co.,Ltd.
Xinmi Huifeng Paper Co.,Ltd.

Xinmi honghua Paper Co.,Ltd.
Xinmi Jiangcheng Paper Co.,Ltd.
Xinmi Xinfeng Paper Co.,Ltd.
Xinmi Shenzhou Paper Co.,Ltd.
Xinmi Huadu Paper Co.,Ltd.
Xinmi Qingping Paper Co.,Ltd.
Xinmi Xinxin Paper Co.,Ltd.
Xinmi Shunfa Paper Co.,Ltd.
Xinmi Jinhai Paper Co.,Ltd.
Xinmi Longchang Paper Co.,Ltd.
Xinmi Xingyuan Paper Mill
Xinmi Hongfa Paper Mill
Xuchang Zhongya Paper Equipment Co.,Ltd.
China United Equipment Group Anyang Machinery Co., Ltd
Anyang Xinwang Paper Co.,Ltd.
Yucheng Dongzhen Paper Co.,Ltd.
Hebi Jielian New Material Technology Co.,Ltd.
Heilongjiang Province
Tsitsihar Yinhe Glass Paper Co.,Ltd.
Hubei Province
Hubei Enshi Chuyan Industry &trade Co.,Ltd.
Hubei Shuyun Paper Co.,Ltd.
Hubei Senyuan Paper Co.,Ltd.
Hubei Qianjiang Fuda Paper Co.,Ltd.
Hubei Qisheng Paper Co.,Ltd.
Hubei Guangfa Paper Co.,Ltd.
Suizhou Xingfengyuan Paper Co.,Ltd.
Laohekou Jinzanyang Paper Co.,Ltd.
Gucheng Dayuqiao Paper Mill
Xiaogan Junpai Technology Co.,Ltd.
Tongcheng Hongxing Paper Co.,Ltd.
Qianjiang Fuda Paper Co.,Ltd.
Zhongxiang Yingqiang Paper Co.,Ltd.
Changyang Hongfa Paper Co.,Ltd.
Yichang Shulin Paper Co.,Ltd.
Chongyang Jinchang Paper Co.,Ltd.
Hunan Province
Hunan Changde Linlijinli Paper Co.,Ltd.
Hunan Chenzhou Jiahe Paper Co.,Ltd.
Hunan Liuyang Xinghua Paper Co.,Ltd.
Hunan Jisheng Paper Mill
Hunan Jingangzhen Jinxing Paper Mill
Hunan Feiye Paper Co.,Ltd.
Hunan Liuyang Shuntai Paper Co.,Ltd.
Hunan Pingjiang Qingyuan Paper Co.,Ltd.
Hunan Liuyang Huimei Paper Co., Ltd.
Hunan Liuyang Yangjialong Paper Co., Ltd.

Hunan Liuyang Mingren Paper Co., Ltd.
Hunan Liuyang Jingwei Paper Co., Ltd.
Hunan Liuyang Guandu Paper Co., Ltd.
Hunan Liuyang Lianxin Paper Mill
Hunan Liuyang Chengtanjing Xingda Paper Mill
Hunan Liuyang Hongxin Fuli Paper Mill
Hunan Liuyang Hongxing Paper Co., Ltd.
Hunan Liuyang Zhenxing Paper Co., Ltd.
Hunan Linxiang Ruya Paper Co., Ltd.
Hunan Linxiang Xingda Paper Co., Ltd.
Hunan Linxiang Jiaxin Industry & Trade Paper Co., Ltd.
Jilin Province
Jilin Songyuanhaichuan Paper Co., Ltd.
Jilin Zongheng Plastic Packaging Co., Ltd.
Jiangsu Province
Jiangsu Yili Import and Export Trading Co., Ltd.
Juanguo Wuxi Shengli Paper Co., Ltd.
Jiangsu Haiyan Jinxin Paper Co., Ltd.
Jiangsu Taizhou Hongyang Packaging Material Paper Co., Ltd.
Jiangsu Yangzhou Guosheng Paper Co., Ltd.
Jiangsu Hongzeyuan Paper Co., Ltd.
Jiangxi Province
Jiangxi Wanzai Jinke Paper Co., Ltd.
Jiangxi Shuanglin Paper Co., Ltd.
Jiangxi Zhengshun Industrial Co., Ltd.
Jiangxi Huatai Industrial Co., Ltd.
Jiangxi Jingan Liangshi Paper Co., Ltd.
Jiangxi Ruijin Jingshan Paper Co., Ltd.
Jiangxi Yudu Zhengyi Paper Co., Ltd.
Jiangxi Yichun Jinhui Paper Co., Ltd.
Jiangxi Shangli Pingfeng Paper Co., Ltd.
Jiangxi Xingguo Jianxin Paper Co., Ltd.
Jiangxi Gaoan Ruiming Paper Co., Ltd.
Jiangxi Guangchang Changsheng Recycling Paper Co., Ltd.
Liaoning Province
Liaoning Shenyang Hongda Paper Co., Ltd.
Liaoning Shenyang Jinyuan Paper Co., Ltd.
Liaoning Xingdong Paper Co., Ltd.
Shandong Province
Shandong Chengwu Kangquan Paper Co., Ltd.
Shandong Dezhou Juxin Paper Co., Ltd.
Shandong Jinan Longzhou Paper Co., Ltd.
Shandong Province
Shanxi Foreign Trade Pingyao Packaging and Printing (Enterprise) Paper Co., Ltd.
Shanxi Jishan Xinjiayuan Paper Co., Ltd.
Shanxi Yuncheng Ziqiang Fuli Paper Mill
Shanxi Yuncheng Ruima Paper Co., Ltd.
Shanxi Zetian Paper Co., Ltd.

Shanxi Changxin Packaging Paper Co., Ltd.
Shanxi Zeyu Package Paper Co., Ltd.
Shanxi Yuncheng Yudu Paper Co., Ltd.
Shanxi Jishan Hongan Paper Mill
Shanxi Qi Beigufeng Paper Co., Ltd.
Shanxi Ying Shengyuan Paper Co., Ltd.
Shanxi Jishan Baoquan Paper Co., Ltd.
Shanxi Yuncheng Jiang Development Zone Xinlong Paper Co., Ltd.
Shanxi Yuncheng Zhai shop Paper Mill
Shanxi Changzhi South China Paper Co., Ltd.
Shanxi Province
Shanxi Pucheng Yongfengliya Paper Co., Ltd.
Shanxi Xingxiang Paper Co., Ltd.
Shanxi Pucheng Qinxing Paper Co., Ltd.
Shanxi Xingping Dongfeng Paper Co., Ltd.
Shanxi Xi'an Chenyang Packaging Co., Ltd.
Shanxi Pucheng Dongxing Paper Co., Ltd.
Shanxi Potou Paper Mill
Shanxi Pucheng Longyuan Paper Co., Ltd.
Shanxi Ankang Hengfeng Paper Co., Ltd.
Shanxi Caijiapo Xinglong Paper Co., Ltd.
Sichuan Province
China United Equipment Group Yibin Machinery Co., Ltd.
Sichuan Chengdu Lianda Paper Co., Ltd.
Sichuan Chengdu Lingyuan Paper Co., Ltd.
Sichuan Shifang Renliang Paper Co., Ltd.
Sichuan Sifang Jiri Paper Co., Ltd.
Sichuan Shifang Chenshi Paper Co., Ltd.
Sichuan Leshan Hongyuan Paper Co., Ltd.
Sichuan Leshan Xinhongye Technology Co., Ltd.
Sichuan Tongliang Tongxin Paper Co., Ltd.
Sichuan Jianyang Yonghe Paper Co., Ltd.
Xinjiang Province
Xinjiang Hengfa Paper Co., Ltd.
Xinjiang Juxinlong Paper Co., Ltd.
Xinjiang Dongsheng Paper Co., Ltd.
Xinjiang Fuli Paper Co., Ltd.
Xinjiang Xibolai Paper Co., Ltd.
Xinjiang Kuerle Ruixin Paper Co., Ltd.
Xinjiang Urumqi Shanrui Industry & Trade Co., Ltd.
Xinjiang Hongqi Paper Co., Ltd.
Xinjiang Yili Guilin Paper Co., Ltd.
Xinjiang Urumqi Yuhuaafeng Paper Co., Ltd.
Xinjiang Urumqi Yumei Paper Co., Ltd.
Xinjiang Urumqi Wuxingliqiang Paper Product Co., Ltd.
Xinjiang Urumqi Jiaruitiancheng Paper Product Co., Ltd.
Xinjiang Urumqi Huimei Paper Co., Ltd.
Xinjiang Aksu Jiangnan Hongda Paper Co., Ltd.
Xinjiang Aksu Taiyuan Paper Co., Ltd.
Xinjiang Chapel Xibo Autonomous County Guilin Paper Co., Ltd.
Xinjiang Manas Yuxin Technology Co., Ltd.
Xinjiang Manas Xiangyunhuaqian Co., Ltd.
Xinjiang Zhaosu Longbao Paper Co., Ltd.
Xinjiang Changji Jianhuang Textile Co., Ltd.
Xinjiang Zepu Heli Paper Co., Ltd.
Yunnan Province
Yunnan Yiliang Red Star Brothers Paper Co., Ltd.
Yunnan Jianshui Chunqiu Paper Co., Ltd.
Yunnan Minhai Paper Co., Ltd.

Yunnan Yuxi Rongjun Paper Co., Ltd.
Yunan Jianshui Jianmin Tuqiang Paper Co., Ltd.
Yunnan Shunda Paper Co., Ltd.
Yunnan Yuxi Yanhe Paper Co., Ltd.
Yunan Kunming Chijiu Paper Co., Ltd.
Yunnan Kunming Zhongxiang Paper Co., Ltd.
Yunnan Jiangchuan Fengmao Paper Co., Ltd.
Yunnan Huaning Yufeng Paper Co., Ltd.
Yunnan Lufeng Tianhe Paper Co., Ltd.
Zhejiang Province
Zhejiang Ningbo Yili International Trade Co., Ltd.
Zhejiang Linan Pailian Paper Co., Ltd.
Zhejiang Linan Wanli Paper Co., Ltd.
Guangxi Province
Guangxi Hengxian Jiangnan Paper Co., Ltd.
Chongqing City
Chongqing Recycled Resources Co., Ltd.
Chongqing Tehong Paper Co., Ltd.
Chongqing Tongliang Tongxin Paper Co., Ltd.
Foreign Customers
Bangladesh Makka Paper & Board Mills Ltd.
Colombia FOLDEX LTDA
Emirates Fine Tissue Industry LLC, U.A.E.
Egypt AL KARMA FOR PAPER INDUSTRIES
Egypt ELMASRYA FOR PAPER MAKING
Ethiopia Barguba Trading Pvt., Ltd.
Germany AVIRETTA GMBH
Indian Varidhi Hygiene Products Pvt. Ltd.
Indian Lucky Star Paper Mill.
Indian S K Paper Mill.
Indian Shree Somnath Paper Mills (P) Ltd.
Indonesia APP
Indonesia PT. AGUNG BUMI LESTARI.
Iranian Meisam Kahgaz Co., Ltd.
Iranian Pardis Kaghaz Pagh Co., Ltd.
Iranian Part Papyrus Co., Ltd.
Kuwait Gulf Paper Manufacturing Co. k.s.c Kuwait
Malaysian EPPOR-PACK SDN.NHD
Malaysian HZ Green Pulp Sdn Bhd
Nigeria Nixin Paper Mill
Nafici Environmental Research Ltd. U.K.
Philippines UNITED PULP AND PAPER CO.,INC.
Sweden Purac AB.
Russia OUTRANSPACK EUROPE COMPANY
Saudi Arabian Al-Azman Factory
South African Gmc INTERNATIONAL LTD
Syria Arab company for paper products Ltd
Syrian Imprimerie Perfect Company
Thailand Riverpro Pulp and Paper Co.Ltd.
Tunisia Greenpack
Turkey Kahramanmaraş Kagit Sanayi Ve Ticaret A.S.
Vietnam Phugiang Production Trade And Service Co., LTD
Vietnam Minh Hung Paper Joint Stock Company
Vietnam Thuy Hai paper CO.,LTD
Vietnam Quang Huy Joint Stock Company
Vietnam Hung Ha Paper Company Limited
Vietnam Suoi Sao paper CO., LTD
Vietnam Sai Gon Mien Trung Paper Joint Stock Company
Vietnam Hung Ha Paper Company Limited
Zambian Metalco Industries Company Limited



**ZHENGZHOU LEIZHAN TECHNOLOGY
PAPER MACHINERY CO., LTD.**

Add: Hetun Industrial Area, Dawei Town, Zhengzhou City,
Henan Province, China, 452383

Tel: +86 371 55129198

Fax: +86 371 86138029

Email: leizhan@zzlzkj.com.cn

<http://www.papermaking-equipment.com>